

Anderson Bond Project Monthly Project Report

October | Karen Hedglin



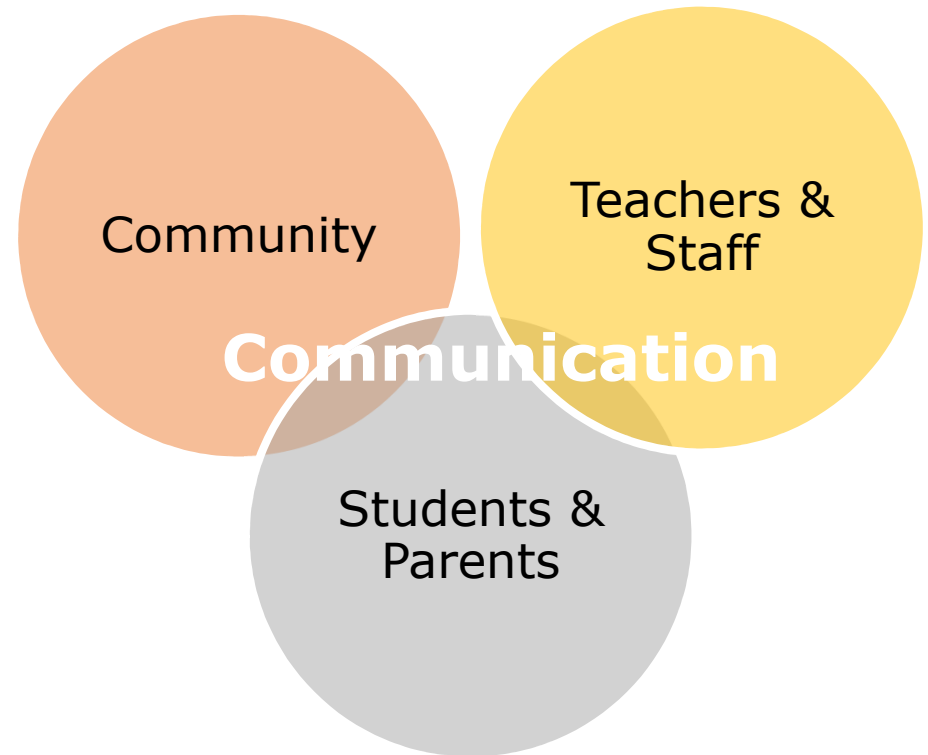
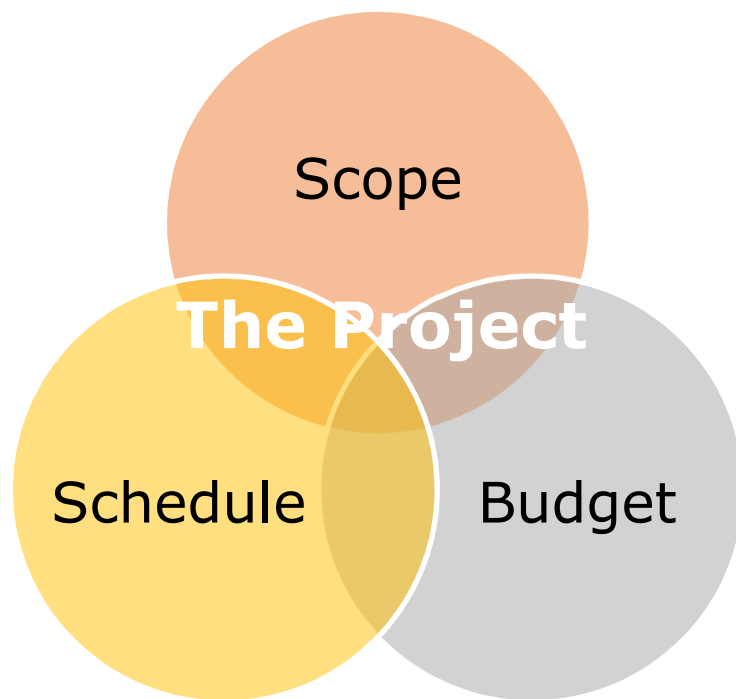
Process

The Bond Has Passed. What Happens Next?

- Election Canvass/Bond Sales
- Contracts - November
- Design process continues
- Construction planning continues
- Communication ongoing, takes a new shape
 - Bond Project Committee
 - Public Meetings: December and March
 - STEM Opportunities

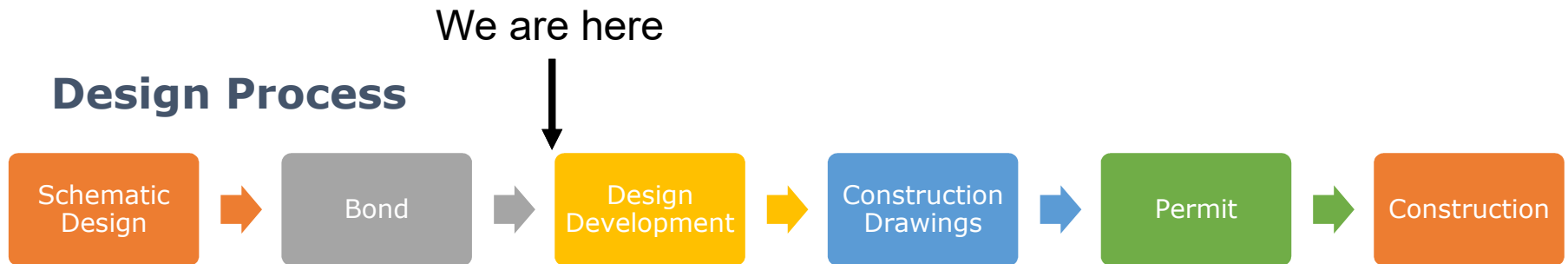


Report Overview



Scope

Design Process



- DropBox Site setup
- Wed Oct. 16th "Office Hours" 11am-1pm table top review
- Design Review Comment Log
- We are now entering the rinse and repeat part of design, where we draw/get feedback/draw again, then cost estimate. We true up to the budget at each design stage, then do it all over again.



Design Review Comment Log

REVIEW COMMENT LOG/ISSUE TRACKER

#	DWG	RM #	Description	Initials	Date	Response	Initials	Closed	Date Closed
46			Concern re: office being replaced at K/1 wing by custodial/storage.	Oriet	8/26/2016	Current office in middle school locker area will remain for this use. 9/15 - Removed one section of bleachers at gym south wall to accommodate office space and storage space lost with kitchen freezer relocation.	KH	✓	9/15/2016
47			Will new windows at mezzanine/specialist rooms be operable?	Hendrickson	8/26/2016	Depends on construction of CMU wall and location of bond beams, along with adjacent roof height. Awaiting DD drawing set for resolution. 9/15 - Two high windows will be included in the teacher workroom. They will not be operable.	KH	✓	9/15/2016
48			Will there be a running track at the gym?	O'Brien	8/26/2016	Yes, there will be a roughly 9' wide concrete floor track/pathway around the railing at the mezzanine. Community use will be encouraged, with access provided by an elevator or stairs once they pass through the front entrance and check in. Staff and student use will also be encouraged.	KH	✓	8/30/2016



Scope

- Music room and stage raised floor removal
- Effluent sampling 4-6 weeks
- Review with State Building Official has been requested
- County Road coordination will begin this month
- NWE coordination will also begin this month



STEM Ideas

STEM Ideas: Book-Based for Younger Students

- Build a Bridge for 21 Elephants – Brooklyn Bridge, story time, kit
- Roberto, the Insect Architect. Build a cardboard city.
- Egyptian Architecture – build a pyramid with sugar cubes.
- Three Little Pigs Challenge – Select a house type and build it.
- Rosie Revere, Engineer
- Iggy Peck, Architect



STEM Ideas

- Why do you measure sidewalks in square feet, but order and pay for concrete in cubic yards? How do you figure out how much you need? MATH
- How can a 3D model tell you where to put steel columns and ductwork? TECHNOLOGY
- How do you organize a construction project? MATH, TECHNOLOGY, ENGINEERING
- What are taxes? How do you know how much taxes each family has to pay? How does our project cost get paid for by the community? MATH, TECHNOLOGY
- Why does concrete get hot after you place it? How hot does it get? How do you make concrete? SCIENCE, CHEMISTRY, MATH



STEM Ideas

- What is energy? Where does it come from? How much does each continent have? How much does each continent need? How does it move from one place to the other? MATH, SCIENCE, TECHNOLOGY
- How can we use math to predict how strong the roof needs to be on the new gym to hold the average snow that we receive in the winter? MATH, SCIENCE, TECHNOLOGY
- How do you know where the corners of the building go? How do you know the wall is straight? Use a survey instrument to find the new corner of the school. MATH, SCIENCE, TECH, ENGR
- How much energy will our new building use? What does that cost? MATH, TECHNOLOGY, SCIENCE



STEM Ideas

- How do you draw a building? How do you read the drawings?
MATH, TECHNOLOGY, ENGR
- How do you communicate complex ideas using drawings, words, and images? TECHNOLOGY, ENGR, TECHNICAL WRITING
- What is a brick made of? How do you make a brick? How many people touch it from its materials to when it goes into a wall?
SCIENCE, MATH, ENGR, TECHNOLOGY
- Why do you wear a hard hat? Why is safety so important on a construction site? What injuries are unique to construction?

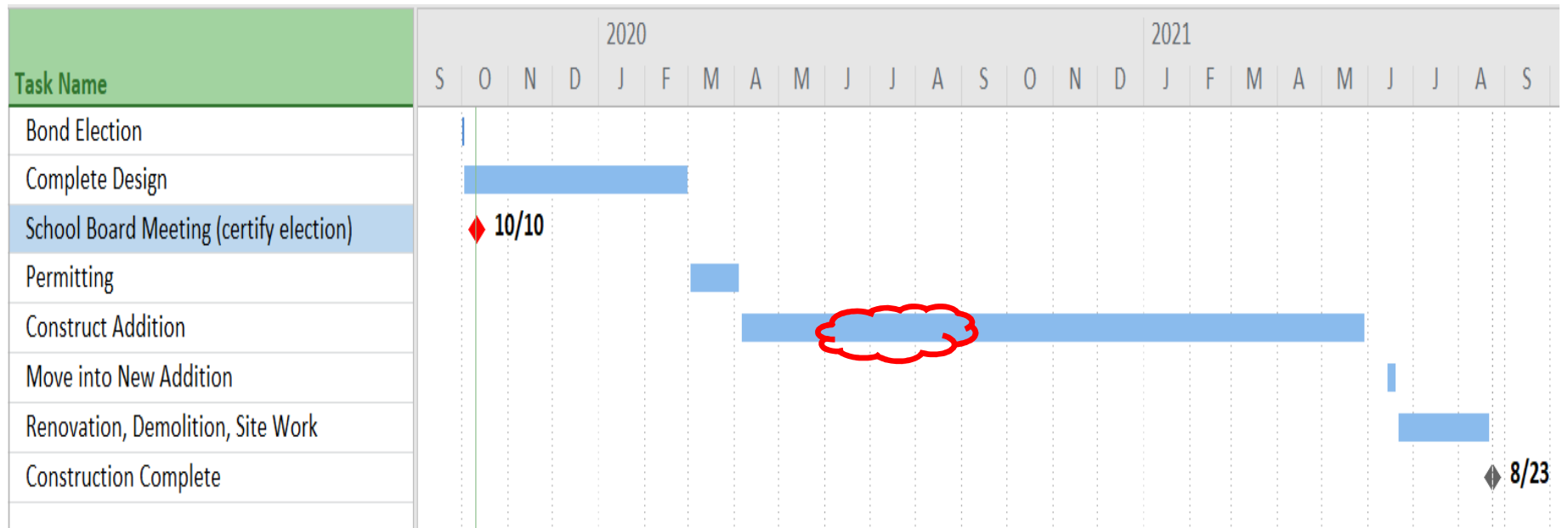


Schedule: Design

CONTINUE DESIGN WORK	OCTOBER 2, 2019
COMPLETE DD LEVEL DOCUMENTS (65%).....	NOVEMBER 30, 2019
COMPLETE CD LEVEL DOCUMENTS (95%).....	JANUARY 31, 2020
COMPLETE CD LEVEL DOCUMENTS (100%).....	FEBRUARY 28, 2020
ISSUE FOR PERMIT	MARCH 1, 2020
SECURE BUILDING PERMIT	MARCH 31, 2020



Schedule: Construction Summer 2020



Budget

- Each month we will review the total project budget.
- Contingency will be reviewed each month.
- This month, no changes have occurred and the project budget is attached.



Communication

Community

- Monthly Reports
- Public Meeting 1st wk December to review design

Teachers & Staff

- DropBox invitations
- Design reviews and tabletop reviews
- Model images
- Facilities Committee
- Bond Project Committee

Students & Parents

- Monthly Reports
- Student Council meetings
- APC meetings
- Public Meeting 1st week of December to review design



Anderson Bond Project Monthly Project Report

October | Karen Hedglin



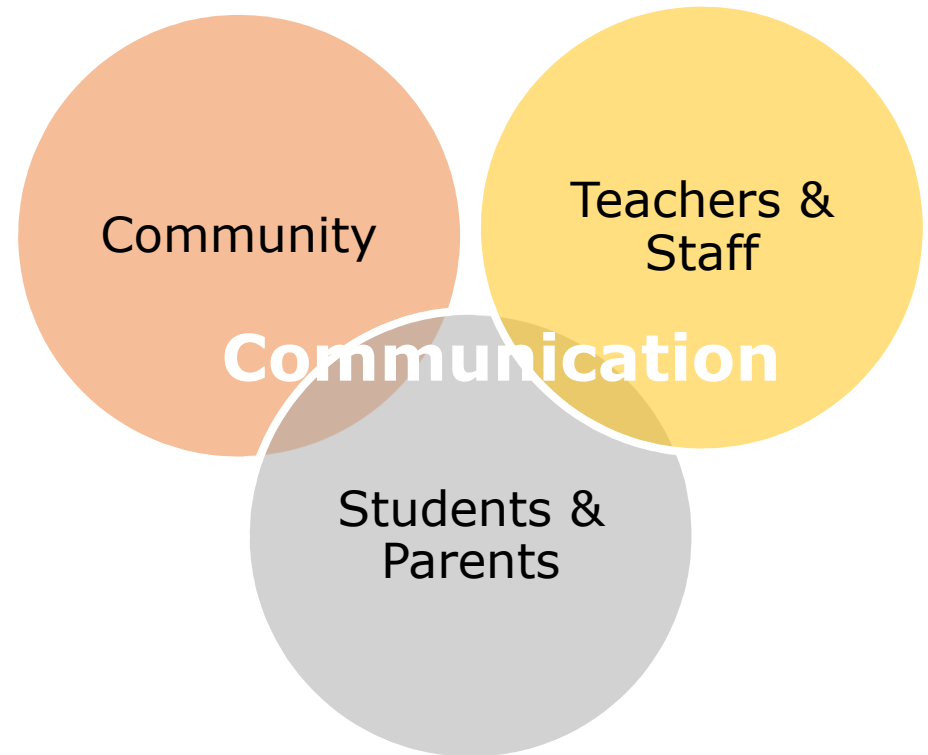
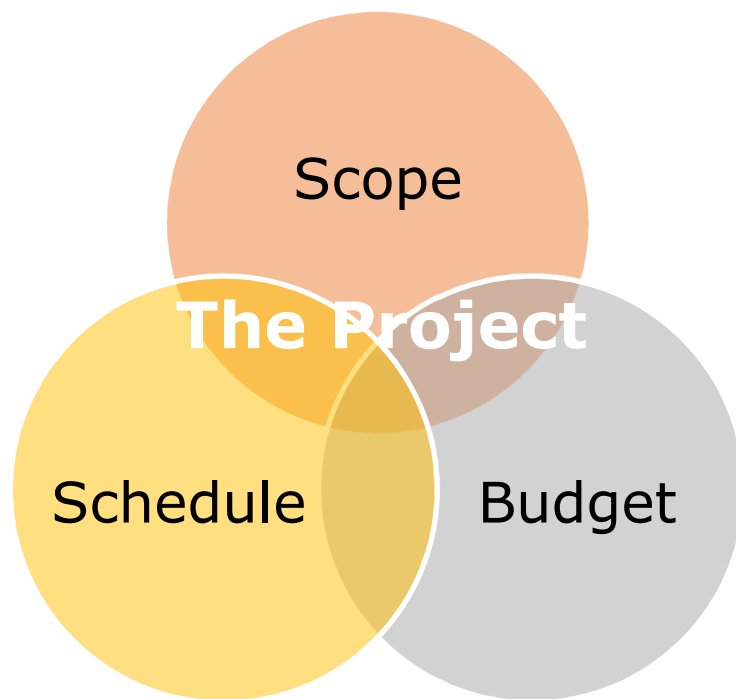
Process

The Bond Has Passed. What Happens Next?

- Election Canvass/Bond Sales
- Contracts - November
- Design process continues
- Construction planning continues
- Communication ongoing, takes a new shape
 - Bond Project Committee
 - Public Meetings: December and March
 - STEM Opportunities

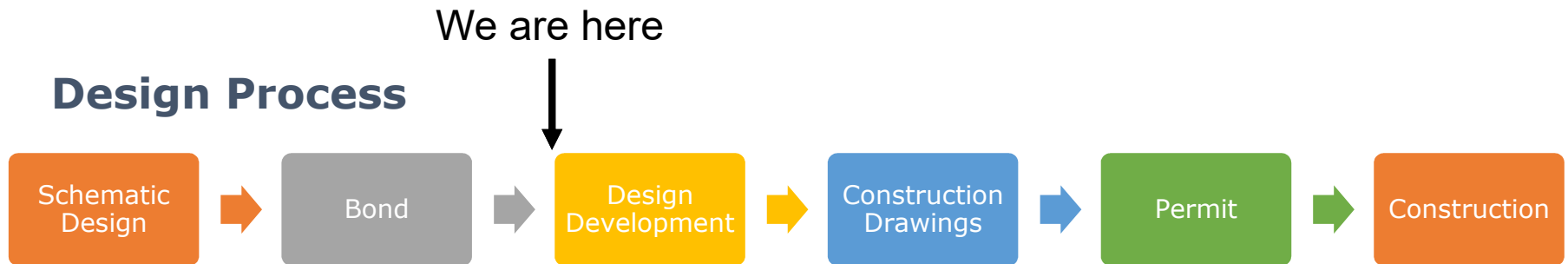


Report Overview



Scope

Design Process



- DropBox Site setup
- Wed Oct. 16th "Office Hours" 11am-1pm table top review
- Design Review Comment Log
- We are now entering the rinse and repeat part of design, where we draw/get feedback/draw again, then cost estimate. We true up to the budget at each design stage, then do it all over again.



Design Review Comment Log

REVIEW COMMENT LOG/ISSUE TRACKER

#	DWG	RM #	Description	Initials	Date	Response	Initials	Closed	Date Closed
46			Concern re: office being replaced at K/1 wing by custodial/storage.	Oriet	8/26/2016	Current office in middle school locker area will remain for this use. 9/15 - Removed one section of bleachers at gym south wall to accommodate office space and storage space lost with kitchen freezer relocation.	KH	✓	9/15/2016
47			Will new windows at mezzanine/specialist rooms be operable?	Hendrickson	8/26/2016	Depends on construction of CMU wall and location of bond beams, along with adjacent roof height. Awaiting DD drawing set for resolution. 9/15 - Two high windows will be included in the teacher workroom. They will not be operable.	KH	✓	9/15/2016
48			Will there be a running track at the gym?	O'Brien	8/26/2016	Yes, there will be a roughly 9' wide concrete floor track/pathway around the railing at the mezzanine. Community use will be encouraged, with access provided by an elevator or stairs once they pass through the front entrance and check in. Staff and student use will also be encouraged.	KH	✓	8/30/2016



Scope

- Music room and stage raised floor removal
- Effluent sampling 4-6 weeks
- Review with State Building Official has been requested
- County Road coordination will begin this month
- NWE coordination will also begin this month



STEM Ideas

STEM Ideas: Book-Based for Younger Students

- Build a Bridge for 21 Elephants – Brooklyn Bridge, story time, kit
- Roberto, the Insect Architect. Build a cardboard city.
- Egyptian Architecture – build a pyramid with sugar cubes.
- Three Little Pigs Challenge – Select a house type and build it.
- Rosie Revere, Engineer
- Iggy Peck, Architect



STEM Ideas

- Why do you measure sidewalks in square feet, but order and pay for concrete in cubic yards? How do you figure out how much you need? MATH
- How can a 3D model tell you where to put steel columns and ductwork? TECHNOLOGY
- How do you organize a construction project? MATH, TECHNOLOGY, ENGINEERING
- What are taxes? How do you know how much taxes each family has to pay? How does our project cost get paid for by the community? MATH, TECHNOLOGY
- Why does concrete get hot after you place it? How hot does it get? How do you make concrete? SCIENCE, CHEMISTRY, MATH



STEM Ideas

- What is energy? Where does it come from? How much does each continent have? How much does each continent need? How does it move from one place to the other? MATH, SCIENCE, TECHNOLOGY
- How can we use math to predict how strong the roof needs to be on the new gym to hold the average snow that we receive in the winter? MATH, SCIENCE, TECHNOLOGY
- How do you know where the corners of the building go? How do you know the wall is straight? Use a survey instrument to find the new corner of the school. MATH, SCIENCE, TECH, ENGR
- How much energy will our new building use? What does that cost? MATH, TECHNOLOGY, SCIENCE



STEM Ideas

- How do you draw a building? How do you read the drawings?
MATH, TECHNOLOGY, ENGR
- How do you communicate complex ideas using drawings, words, and images? TECHNOLOGY, ENGR, TECHNICAL WRITING
- What is a brick made of? How do you make a brick? How many people touch it from its materials to when it goes into a wall?
SCIENCE, MATH, ENGR, TECHNOLOGY
- Why do you wear a hard hat? Why is safety so important on a construction site? What injuries are unique to construction?

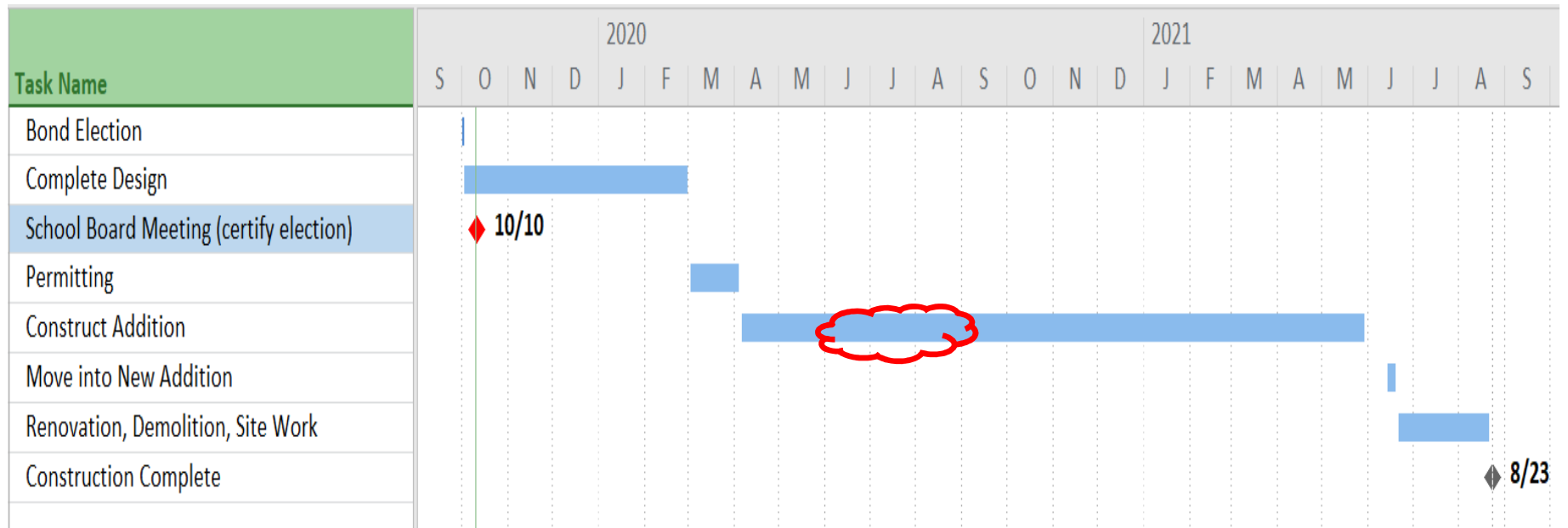


Schedule: Design

CONTINUE DESIGN WORK	OCTOBER 2, 2019
COMPLETE DD LEVEL DOCUMENTS (65%).....	NOVEMBER 30, 2019
COMPLETE CD LEVEL DOCUMENTS (95%).....	JANUARY 31, 2020
COMPLETE CD LEVEL DOCUMENTS (100%).....	FEBRUARY 28, 2020
ISSUE FOR PERMIT	MARCH 1, 2020
SECURE BUILDING PERMIT	MARCH 31, 2020



Schedule: Construction Summer 2020



Budget

- Each month we will review the total project budget.
- Contingency will be reviewed each month.
- This month, no changes have occurred and the project budget is attached.



Communication

Community

- Monthly Reports
- Public Meeting 1st wk December to review design

Teachers & Staff

- DropBox invitations
- Design reviews and tabletop reviews
- Model images
- Facilities Committee
- Bond Project Committee

Students & Parents

- Monthly Reports
- Student Council meetings
- APC meetings
- Public Meeting 1st week of December to review design



Anderson Bond Project Monthly Project Report

October | Karen Hedglin



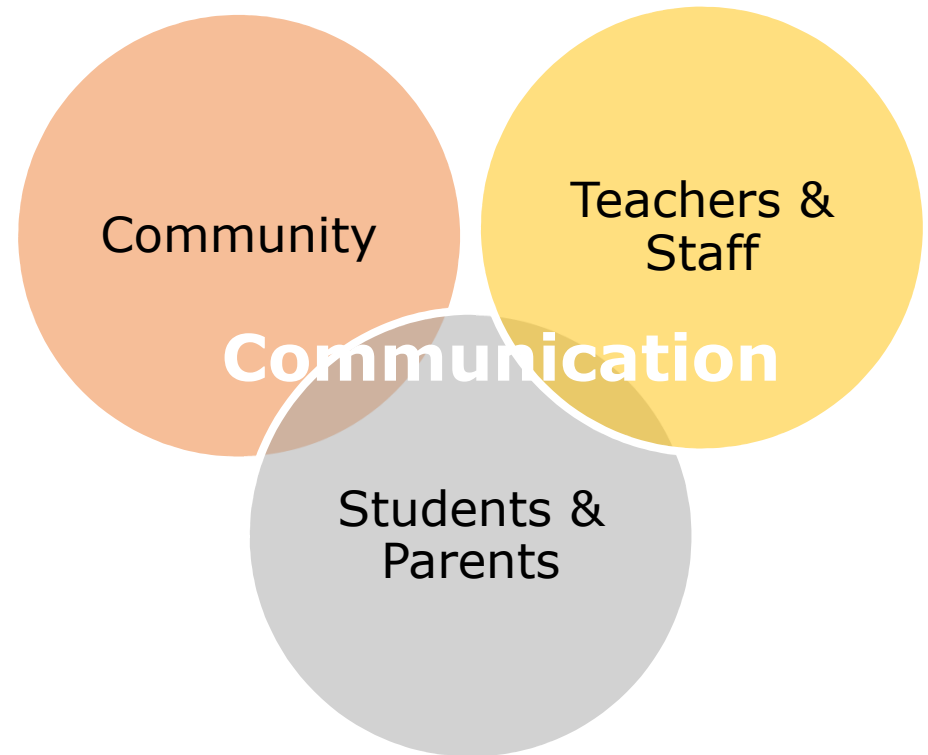
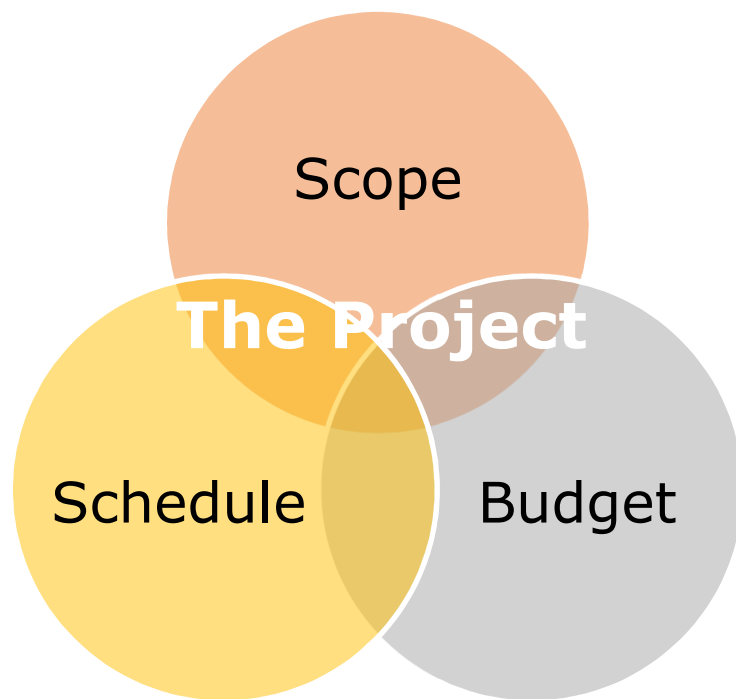
Process

The Bond Has Passed. What Happens Next?

- Election Canvass/Bond Sales
- Contracts - November
- Design process continues
- Construction planning continues
- Communication ongoing, takes a new shape
 - Bond Project Committee
 - Public Meetings: December and March
 - STEM Opportunities

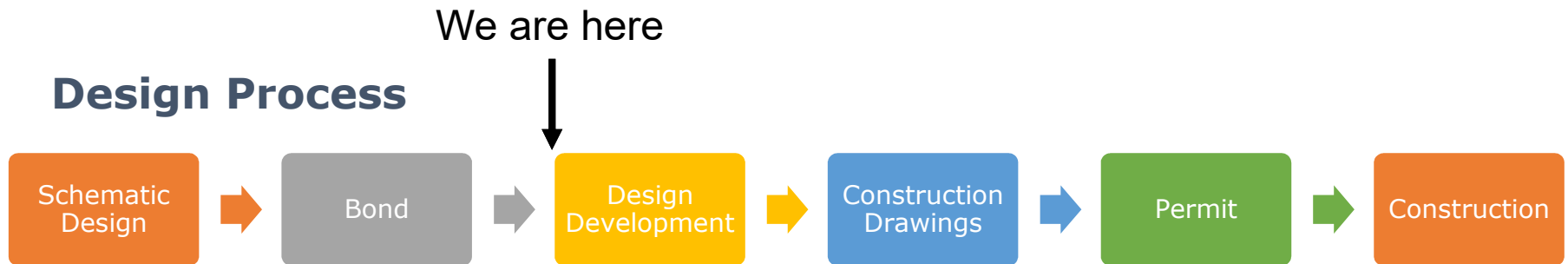


Report Overview



Scope

Design Process



- DropBox Site setup
- Wed Oct. 16th "Office Hours" 11am-1pm table top review
- Design Review Comment Log
- We are now entering the rinse and repeat part of design, where we draw/get feedback/draw again, then cost estimate. We true up to the budget at each design stage, then do it all over again.



Design Review Comment Log

REVIEW COMMENT LOG/ISSUE TRACKER

#	DWG	RM #	Description	Initials	Date	Response	Initials	Closed	Date Closed
46			Concern re: office being replaced at K/1 wing by custodial/storage.	Oriet	8/26/2016	Current office in middle school locker area will remain for this use. 9/15 - Removed one section of bleachers at gym south wall to accommodate office space and storage space lost with kitchen freezer relocation.	KH	✓	9/15/2016
47			Will new windows at mezzanine/specialist rooms be operable?	Hendrickson	8/26/2016	Depends on construction of CMU wall and location of bond beams, along with adjacent roof height. Awaiting DD drawing set for resolution. 9/15 - Two high windows will be included in the teacher workroom. They will not be operable.	KH	✓	9/15/2016
48			Will there be a running track at the gym?	O'Brien	8/26/2016	Yes, there will be a roughly 9' wide concrete floor track/pathway around the railing at the mezzanine. Community use will be encouraged, with access provided by an elevator or stairs once they pass through the front entrance and check in. Staff and student use will also be encouraged.	KH	✓	8/30/2016



Scope

- Music room and stage raised floor removal
- Effluent sampling 4-6 weeks
- Review with State Building Official has been requested
- County Road coordination will begin this month
- NWE coordination will also begin this month



STEM Ideas

STEM Ideas: Book-Based for Younger Students

- Build a Bridge for 21 Elephants – Brooklyn Bridge, story time, kit
- Roberto, the Insect Architect. Build a cardboard city.
- Egyptian Architecture – build a pyramid with sugar cubes.
- Three Little Pigs Challenge – Select a house type and build it.
- Rosie Revere, Engineer
- Iggy Peck, Architect



STEM Ideas

- Why do you measure sidewalks in square feet, but order and pay for concrete in cubic yards? How do you figure out how much you need? MATH
- How can a 3D model tell you where to put steel columns and ductwork? TECHNOLOGY
- How do you organize a construction project? MATH, TECHNOLOGY, ENGINEERING
- What are taxes? How do you know how much taxes each family has to pay? How does our project cost get paid for by the community? MATH, TECHNOLOGY
- Why does concrete get hot after you place it? How hot does it get? How do you make concrete? SCIENCE, CHEMISTRY, MATH



STEM Ideas

- What is energy? Where does it come from? How much does each continent have? How much does each continent need? How does it move from one place to the other? MATH, SCIENCE, TECHNOLOGY
- How can we use math to predict how strong the roof needs to be on the new gym to hold the average snow that we receive in the winter? MATH, SCIENCE, TECHNOLOGY
- How do you know where the corners of the building go? How do you know the wall is straight? Use a survey instrument to find the new corner of the school. MATH, SCIENCE, TECH, ENGR
- How much energy will our new building use? What does that cost? MATH, TECHNOLOGY, SCIENCE



STEM Ideas

- How do you draw a building? How do you read the drawings?
MATH, TECHNOLOGY, ENGR
- How do you communicate complex ideas using drawings, words, and images? TECHNOLOGY, ENGR, TECHNICAL WRITING
- What is a brick made of? How do you make a brick? How many people touch it from its materials to when it goes into a wall?
SCIENCE, MATH, ENGR, TECHNOLOGY
- Why do you wear a hard hat? Why is safety so important on a construction site? What injuries are unique to construction?

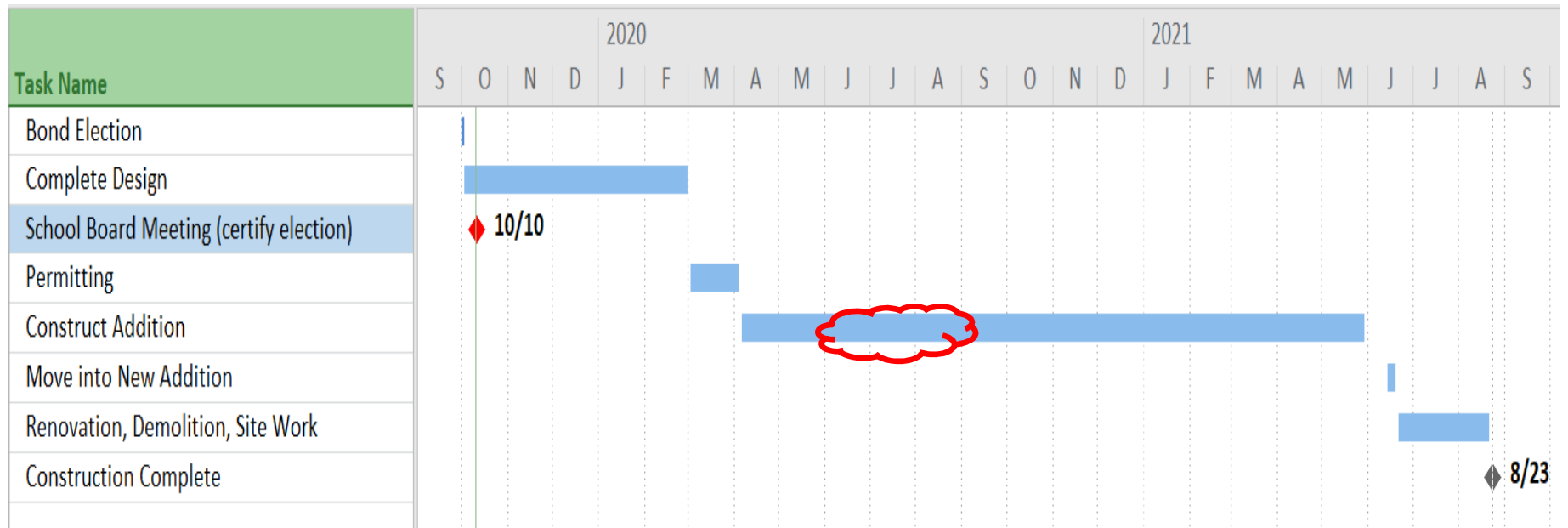


Schedule: Design

CONTINUE DESIGN WORK	OCTOBER 2, 2019
COMPLETE DD LEVEL DOCUMENTS (65%).....	NOVEMBER 30, 2019
COMPLETE CD LEVEL DOCUMENTS (95%).....	JANUARY 31, 2020
COMPLETE CD LEVEL DOCUMENTS (100%).....	FEBRUARY 28, 2020
ISSUE FOR PERMIT	MARCH 1, 2020
SECURE BUILDING PERMIT	MARCH 31, 2020



Schedule: Construction Summer 2020



Budget

- Each month we will review the total project budget.
- Contingency will be reviewed each month.
- This month, no changes have occurred and the project budget is attached.



Communication

Community

- Monthly Reports
- Public Meeting 1st wk December to review design

Teachers & Staff

- DropBox invitations
- Design reviews and tabletop reviews
- Model images
- Facilities Committee
- Bond Project Committee

Students & Parents

- Monthly Reports
- Student Council meetings
- APC meetings
- Public Meeting 1st week of December to review design



Anderson Bond Project Monthly Project Report

October | Karen Hedglin



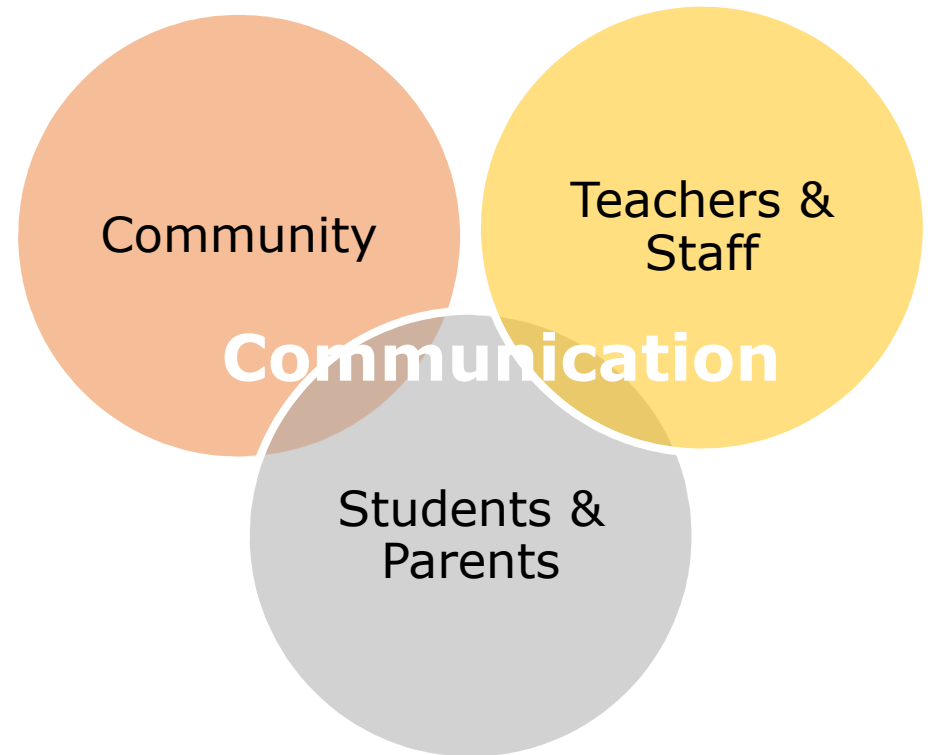
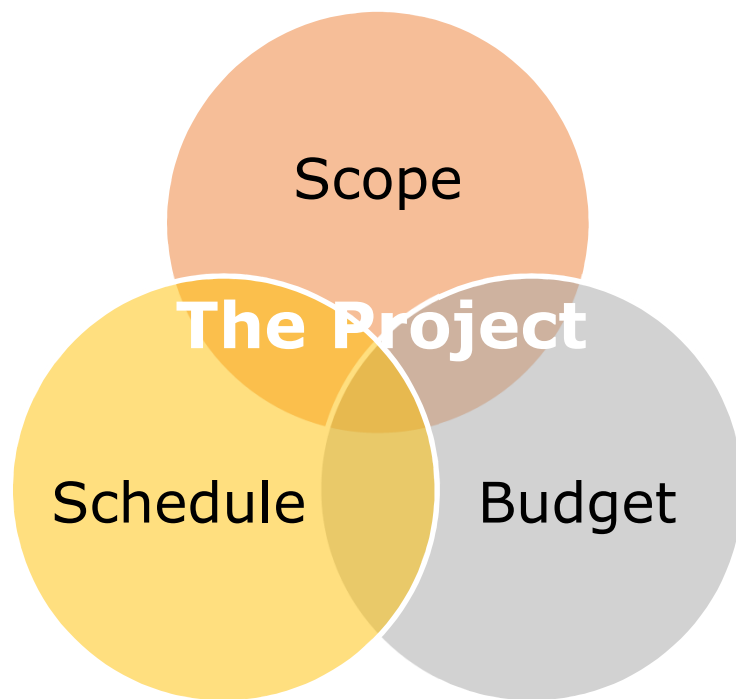
Process

The Bond Has Passed. What Happens Next?

- Election Canvass/Bond Sales
- Contracts - November
- Design process continues
- Construction planning continues
- Communication ongoing, takes a new shape
 - Bond Project Committee
 - Public Meetings: December and March
 - STEM Opportunities

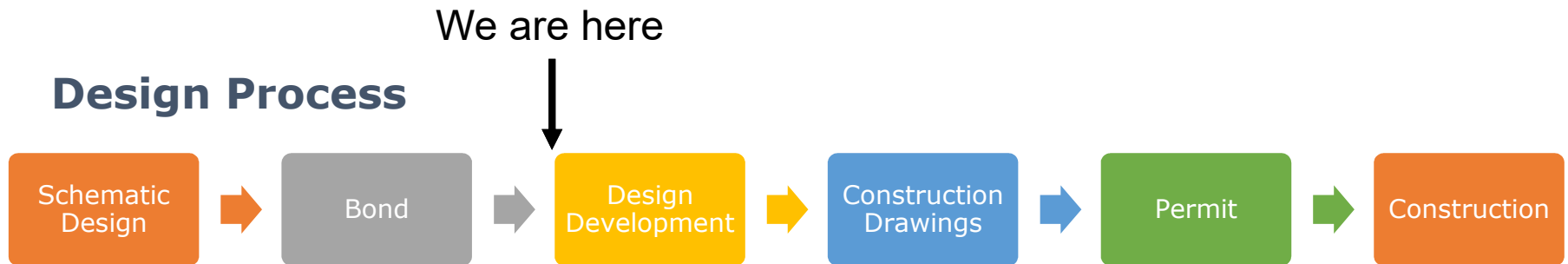


Report Overview



Scope

Design Process



- DropBox Site setup
- Wed Oct. 16th “Office Hours” 11am-1pm table top review
- Design Review Comment Log
- We are now entering the rinse and repeat part of design, where we draw/get feedback/draw again, then cost estimate. We true up to the budget at each design stage, then do it all over again.



Design Review Comment Log

REVIEW COMMENT LOG/ISSUE TRACKER

#	DWG	RM #	Description	Initials	Date	Response	Initials	Closed	Date Closed
46			Concern re: office being replaced at K/1 wing by custodial/storage.	Oriet	8/26/2016	Current office in middle school locker area will remain for this use. 9/15 - Removed one section of bleachers at gym south wall to accommodate office space and storage space lost with kitchen freezer relocation.	KH	✓	9/15/2016
47			Will new windows at mezzanine/specialist rooms be operable?	Hendrickson	8/26/2016	Depends on construction of CMU wall and location of bond beams, along with adjacent roof height. Awaiting DD drawing set for resolution. 9/15 - Two high windows will be included in the teacher workroom. They will not be operable.	KH	✓	9/15/2016
48			Will there be a running track at the gym?	O'Brien	8/26/2016	Yes, there will be a roughly 9' wide concrete floor track/pathway around the railing at the mezzanine. Community use will be encouraged, with access provided by an elevator or stairs once they pass through the front entrance and check in. Staff and student use will also be encouraged.	KH	✓	8/30/2016



Scope

- Music room and stage raised floor removal
- Effluent sampling 4-6 weeks
- Review with State Building Official has been requested
- County Road coordination will begin this month
- NWE coordination will also begin this month



STEM Ideas

STEM Ideas: Book-Based for Younger Students

- Build a Bridge for 21 Elephants – Brooklyn Bridge, story time, kit
- Roberto, the Insect Architect. Build a cardboard city.
- Egyptian Architecture – build a pyramid with sugar cubes.
- Three Little Pigs Challenge – Select a house type and build it.
- Rosie Revere, Engineer
- Iggy Peck, Architect



STEM Ideas

- Why do you measure sidewalks in square feet, but order and pay for concrete in cubic yards? How do you figure out how much you need? MATH
- How can a 3D model tell you where to put steel columns and ductwork? TECHNOLOGY
- How do you organize a construction project? MATH, TECHNOLOGY, ENGINEERING
- What are taxes? How do you know how much taxes each family has to pay? How does our project cost get paid for by the community? MATH, TECHNOLOGY
- Why does concrete get hot after you place it? How hot does it get? How do you make concrete? SCIENCE, CHEMISTRY, MATH



STEM Ideas

- What is energy? Where does it come from? How much does each continent have? How much does each continent need? How does it move from one place to the other? MATH, SCIENCE, TECHNOLOGY
- How can we use math to predict how strong the roof needs to be on the new gym to hold the average snow that we receive in the winter? MATH, SCIENCE, TECHNOLOGY
- How do you know where the corners of the building go? How do you know the wall is straight? Use a survey instrument to find the new corner of the school. MATH, SCIENCE, TECH, ENGR
- How much energy will our new building use? What does that cost? MATH, TECHNOLOGY, SCIENCE



STEM Ideas

- How do you draw a building? How do you read the drawings?
MATH, TECHNOLOGY, ENGR
- How do you communicate complex ideas using drawings, words, and images? TECHNOLOGY, ENGR, TECHNICAL WRITING
- What is a brick made of? How do you make a brick? How many people touch it from its materials to when it goes into a wall?
SCIENCE, MATH, ENGR, TECHNOLOGY
- Why do you wear a hard hat? Why is safety so important on a construction site? What injuries are unique to construction?

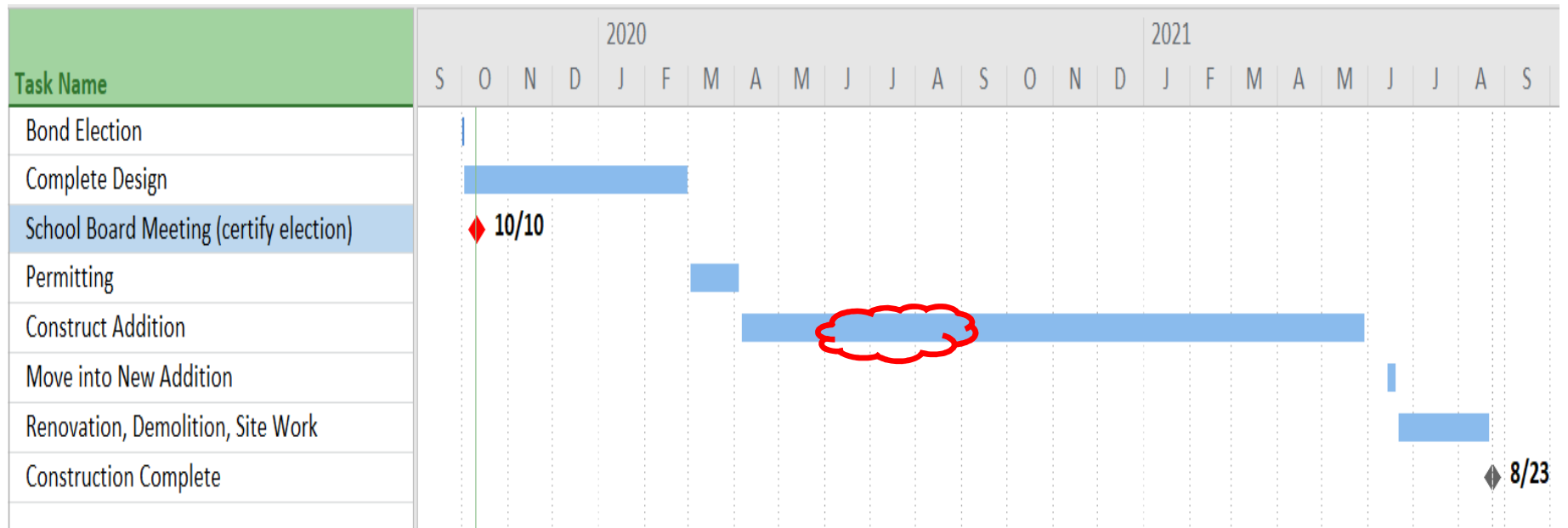


Schedule: Design

CONTINUE DESIGN WORK	OCTOBER 2, 2019
COMPLETE DD LEVEL DOCUMENTS (65%).....	NOVEMBER 30, 2019
COMPLETE CD LEVEL DOCUMENTS (95%).....	JANUARY 31, 2020
COMPLETE CD LEVEL DOCUMENTS (100%).....	FEBRUARY 28, 2020
ISSUE FOR PERMIT	MARCH 1, 2020
SECURE BUILDING PERMIT	MARCH 31, 2020



Schedule: Construction Summer 2020



Budget

- Each month we will review the total project budget.
- Contingency will be reviewed each month.
- This month, no changes have occurred and the project budget is attached.



Communication

Community

- Monthly Reports
- Public Meeting 1st wk December to review design

Teachers & Staff

- DropBox invitations
- Design reviews and tabletop reviews
- Model images
- Facilities Committee
- Bond Project Committee

Students & Parents

- Monthly Reports
- Student Council meetings
- APC meetings
- Public Meeting 1st week of December to review design



Anderson Bond Project Monthly Project Report

October | Karen Hedglin



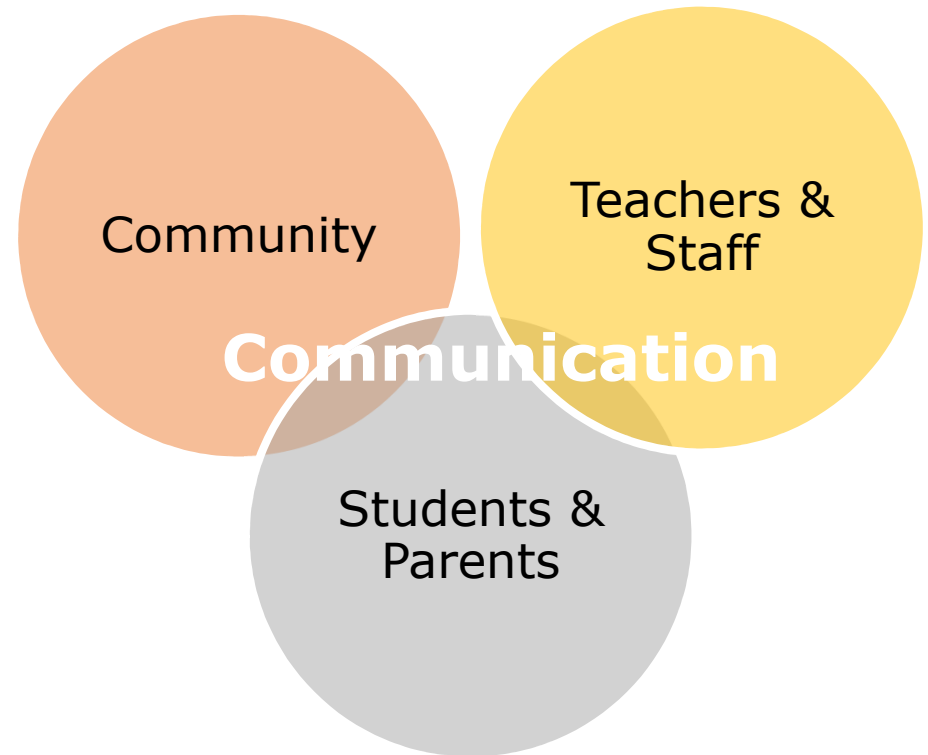
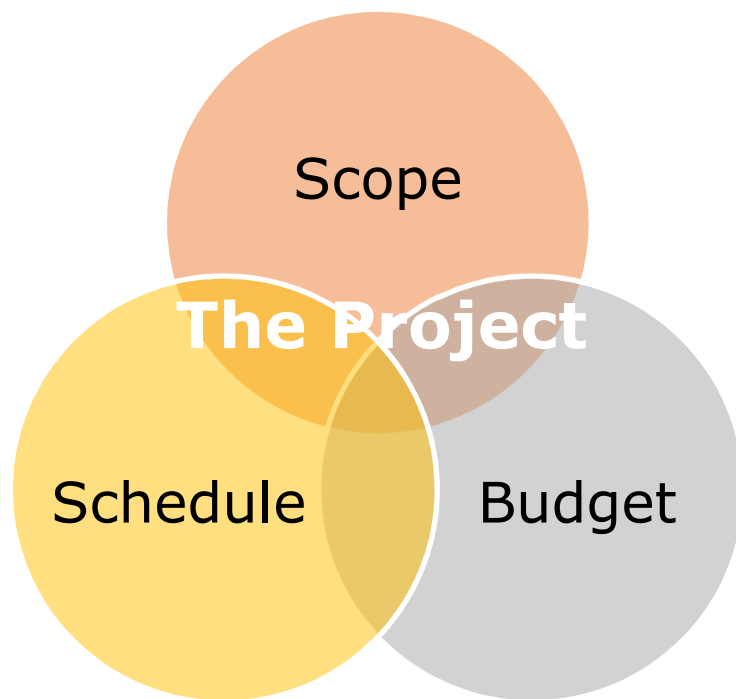
Process

The Bond Has Passed. What Happens Next?

- Election Canvass/Bond Sales
- Contracts - November
- Design process continues
- Construction planning continues
- Communication ongoing, takes a new shape
 - Bond Project Committee
 - Public Meetings: December and March
 - STEM Opportunities

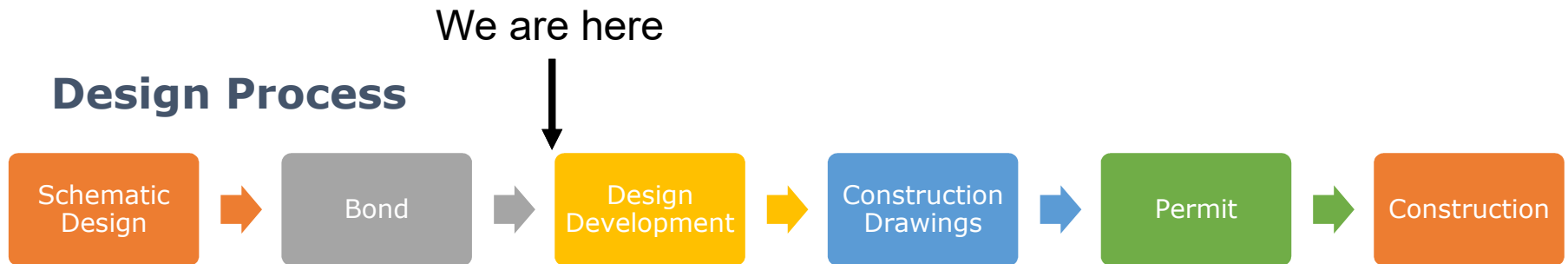


Report Overview



Scope

Design Process



- DropBox Site setup
- Wed Oct. 16th "Office Hours" 11am-1pm table top review
- Design Review Comment Log
- We are now entering the rinse and repeat part of design, where we draw/get feedback/draw again, then cost estimate. We true up to the budget at each design stage, then do it all over again.



Design Review Comment Log

REVIEW COMMENT LOG/ISSUE TRACKER

#	DWG	RM #	Description	Initials	Date	Response	Initials	Closed	Date Closed
46			Concern re: office being replaced at K/1 wing by custodial/storage.	Oriet	8/26/2016	Current office in middle school locker area will remain for this use. 9/15 - Removed one section of bleachers at gym south wall to accommodate office space and storage space lost with kitchen freezer relocation.	KH	✓	9/15/2016
47			Will new windows at mezzanine/specialist rooms be operable?	Hendrickson	8/26/2016	Depends on construction of CMU wall and location of bond beams, along with adjacent roof height. Awaiting DD drawing set for resolution. 9/15 - Two high windows will be included in the teacher workroom. They will not be operable.	KH	✓	9/15/2016
48			Will there be a running track at the gym?	O'Brien	8/26/2016	Yes, there will be a roughly 9' wide concrete floor track/pathway around the railing at the mezzanine. Community use will be encouraged, with access provided by an elevator or stairs once they pass through the front entrance and check in. Staff and student use will also be encouraged.	KH	✓	8/30/2016



Scope

- Music room and stage raised floor removal
- Effluent sampling 4-6 weeks
- Review with State Building Official has been requested
- County Road coordination will begin this month
- NWE coordination will also begin this month



STEM Ideas

STEM Ideas: Book-Based for Younger Students

- Build a Bridge for 21 Elephants – Brooklyn Bridge, story time, kit
- Roberto, the Insect Architect. Build a cardboard city.
- Egyptian Architecture – build a pyramid with sugar cubes.
- Three Little Pigs Challenge – Select a house type and build it.
- Rosie Revere, Engineer
- Iggy Peck, Architect



STEM Ideas

- Why do you measure sidewalks in square feet, but order and pay for concrete in cubic yards? How do you figure out how much you need? MATH
- How can a 3D model tell you where to put steel columns and ductwork? TECHNOLOGY
- How do you organize a construction project? MATH, TECHNOLOGY, ENGINEERING
- What are taxes? How do you know how much taxes each family has to pay? How does our project cost get paid for by the community? MATH, TECHNOLOGY
- Why does concrete get hot after you place it? How hot does it get? How do you make concrete? SCIENCE, CHEMISTRY, MATH



STEM Ideas

- What is energy? Where does it come from? How much does each continent have? How much does each continent need? How does it move from one place to the other? MATH, SCIENCE, TECHNOLOGY
- How can we use math to predict how strong the roof needs to be on the new gym to hold the average snow that we receive in the winter? MATH, SCIENCE, TECHNOLOGY
- How do you know where the corners of the building go? How do you know the wall is straight? Use a survey instrument to find the new corner of the school. MATH, SCIENCE, TECH, ENGR
- How much energy will our new building use? What does that cost? MATH, TECHNOLOGY, SCIENCE



STEM Ideas

- How do you draw a building? How do you read the drawings?
MATH, TECHNOLOGY, ENGR
- How do you communicate complex ideas using drawings, words, and images? TECHNOLOGY, ENGR, TECHNICAL WRITING
- What is a brick made of? How do you make a brick? How many people touch it from its materials to when it goes into a wall?
SCIENCE, MATH, ENGR, TECHNOLOGY
- Why do you wear a hard hat? Why is safety so important on a construction site? What injuries are unique to construction?

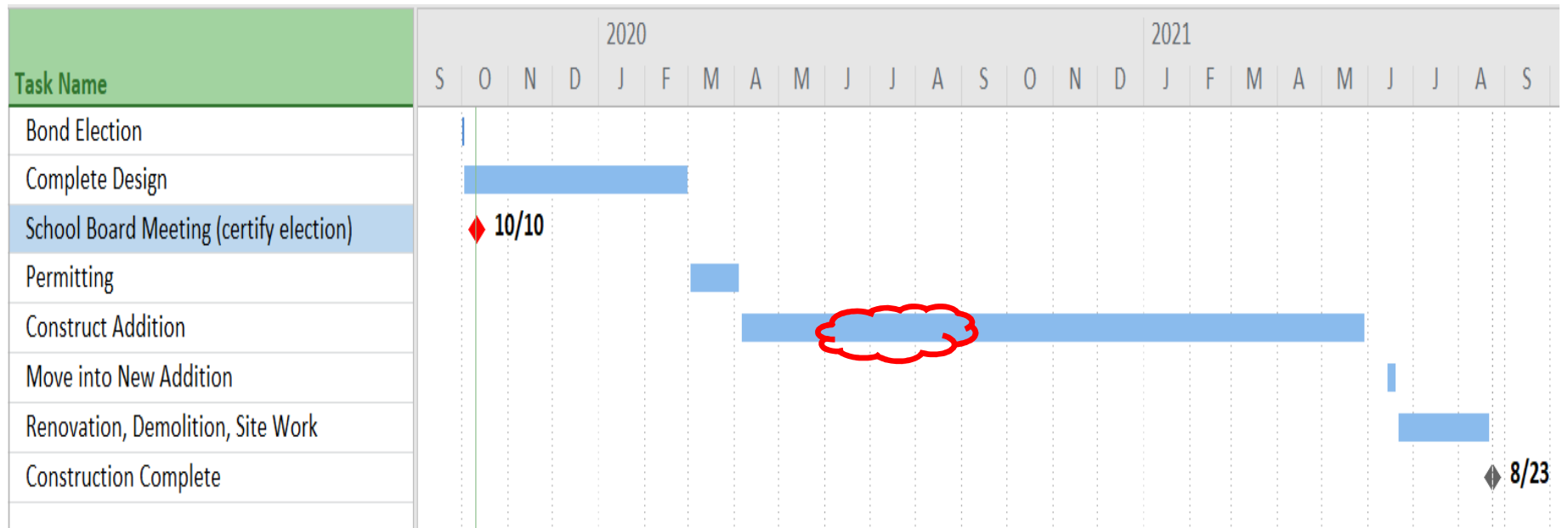


Schedule: Design

CONTINUE DESIGN WORK	OCTOBER 2, 2019
COMPLETE DD LEVEL DOCUMENTS (65%).....	NOVEMBER 30, 2019
COMPLETE CD LEVEL DOCUMENTS (95%).....	JANUARY 31, 2020
COMPLETE CD LEVEL DOCUMENTS (100%).....	FEBRUARY 28, 2020
ISSUE FOR PERMIT	MARCH 1, 2020
SECURE BUILDING PERMIT	MARCH 31, 2020



Schedule: Construction Summer 2020



Budget

- Each month we will review the total project budget.
- Contingency will be reviewed each month.
- This month, no changes have occurred and the project budget is attached.



Communication

Community

- Monthly Reports
- Public Meeting 1st wk December to review design

Teachers & Staff

- DropBox invitations
- Design reviews and tabletop reviews
- Model images
- Facilities Committee
- Bond Project Committee

Students & Parents

- Monthly Reports
- Student Council meetings
- APC meetings
- Public Meeting 1st week of December to review design



Anderson Bond Project Monthly Project Report

October | Karen Hedglin



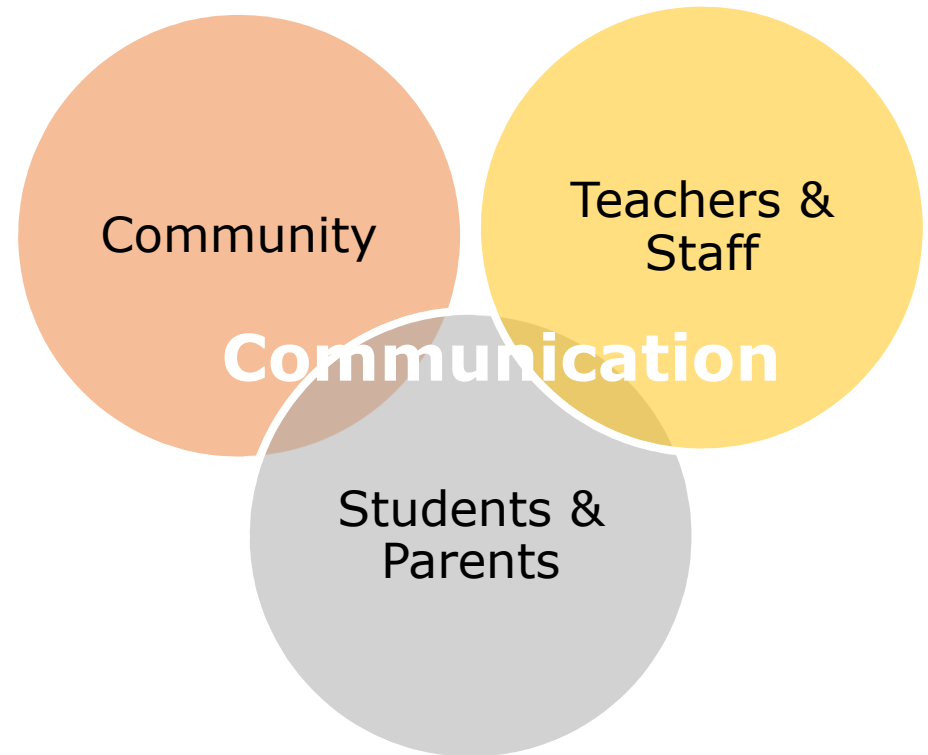
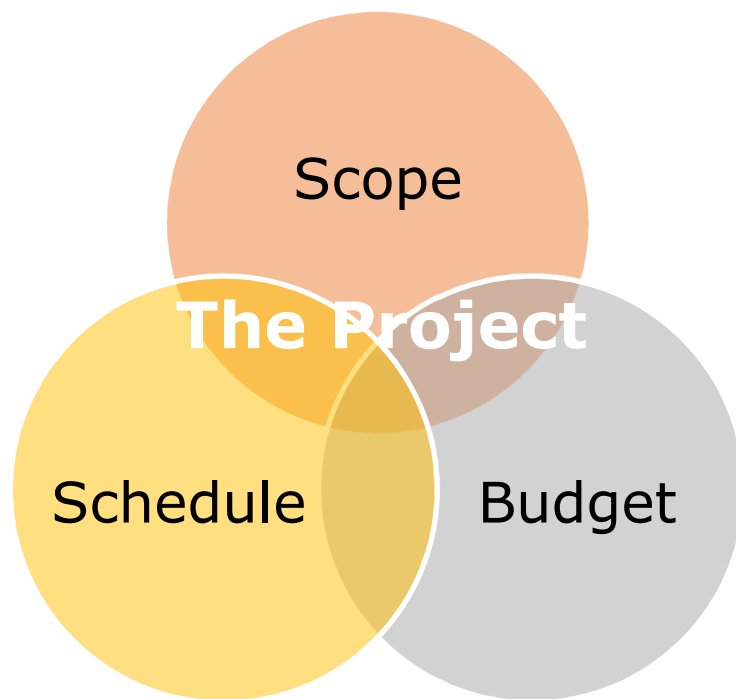
Process

The Bond Has Passed. What Happens Next?

- Election Canvass/Bond Sales
- Contracts - November
- Design process continues
- Construction planning continues
- Communication ongoing, takes a new shape
 - Bond Project Committee
 - Public Meetings: December and March
 - STEM Opportunities

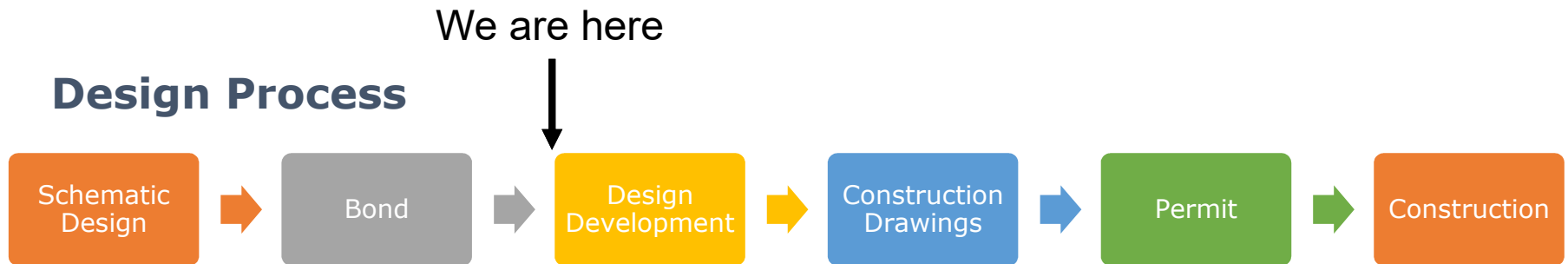


Report Overview



Scope

Design Process



- DropBox Site setup
- Wed Oct. 16th "Office Hours" 11am-1pm table top review
- Design Review Comment Log
- We are now entering the rinse and repeat part of design, where we draw/get feedback/draw again, then cost estimate. We true up to the budget at each design stage, then do it all over again.



Design Review Comment Log

REVIEW COMMENT LOG/ISSUE TRACKER

#	DWG	RM #	Description	Initials	Date	Response	Initials	Closed	Date Closed
46			Concern re: office being replaced at K/1 wing by custodial/storage.	Oriet	8/26/2016	Current office in middle school locker area will remain for this use. 9/15 - Removed one section of bleachers at gym south wall to accommodate office space and storage space lost with kitchen freezer relocation.	KH	✓	9/15/2016
47			Will new windows at mezzanine/specialist rooms be operable?	Hendrickson	8/26/2016	Depends on construction of CMU wall and location of bond beams, along with adjacent roof height. Awaiting DD drawing set for resolution. 9/15 - Two high windows will be included in the teacher workroom. They will not be operable.	KH	✓	9/15/2016
48			Will there be a running track at the gym?	O'Brien	8/26/2016	Yes, there will be a roughly 9' wide concrete floor track/pathway around the railing at the mezzanine. Community use will be encouraged, with access provided by an elevator or stairs once they pass through the front entrance and check in. Staff and student use will also be encouraged.	KH	✓	8/30/2016



Scope

- Music room and stage raised floor removal
- Effluent sampling 4-6 weeks
- Review with State Building Official has been requested
- County Road coordination will begin this month
- NWE coordination will also begin this month



STEM Ideas

STEM Ideas: Book-Based for Younger Students

- Build a Bridge for 21 Elephants – Brooklyn Bridge, story time, kit
- Roberto, the Insect Architect. Build a cardboard city.
- Egyptian Architecture – build a pyramid with sugar cubes.
- Three Little Pigs Challenge – Select a house type and build it.
- Rosie Revere, Engineer
- Iggy Peck, Architect



STEM Ideas

- Why do you measure sidewalks in square feet, but order and pay for concrete in cubic yards? How do you figure out how much you need? MATH
- How can a 3D model tell you where to put steel columns and ductwork? TECHNOLOGY
- How do you organize a construction project? MATH, TECHNOLOGY, ENGINEERING
- What are taxes? How do you know how much taxes each family has to pay? How does our project cost get paid for by the community? MATH, TECHNOLOGY
- Why does concrete get hot after you place it? How hot does it get? How do you make concrete? SCIENCE, CHEMISTRY, MATH



STEM Ideas

- What is energy? Where does it come from? How much does each continent have? How much does each continent need? How does it move from one place to the other? MATH, SCIENCE, TECHNOLOGY
- How can we use math to predict how strong the roof needs to be on the new gym to hold the average snow that we receive in the winter? MATH, SCIENCE, TECHNOLOGY
- How do you know where the corners of the building go? How do you know the wall is straight? Use a survey instrument to find the new corner of the school. MATH, SCIENCE, TECH, ENGR
- How much energy will our new building use? What does that cost? MATH, TECHNOLOGY, SCIENCE



STEM Ideas

- How do you draw a building? How do you read the drawings?
MATH, TECHNOLOGY, ENGR
- How do you communicate complex ideas using drawings, words, and images? TECHNOLOGY, ENGR, TECHNICAL WRITING
- What is a brick made of? How do you make a brick? How many people touch it from its materials to when it goes into a wall?
SCIENCE, MATH, ENGR, TECHNOLOGY
- Why do you wear a hard hat? Why is safety so important on a construction site? What injuries are unique to construction?

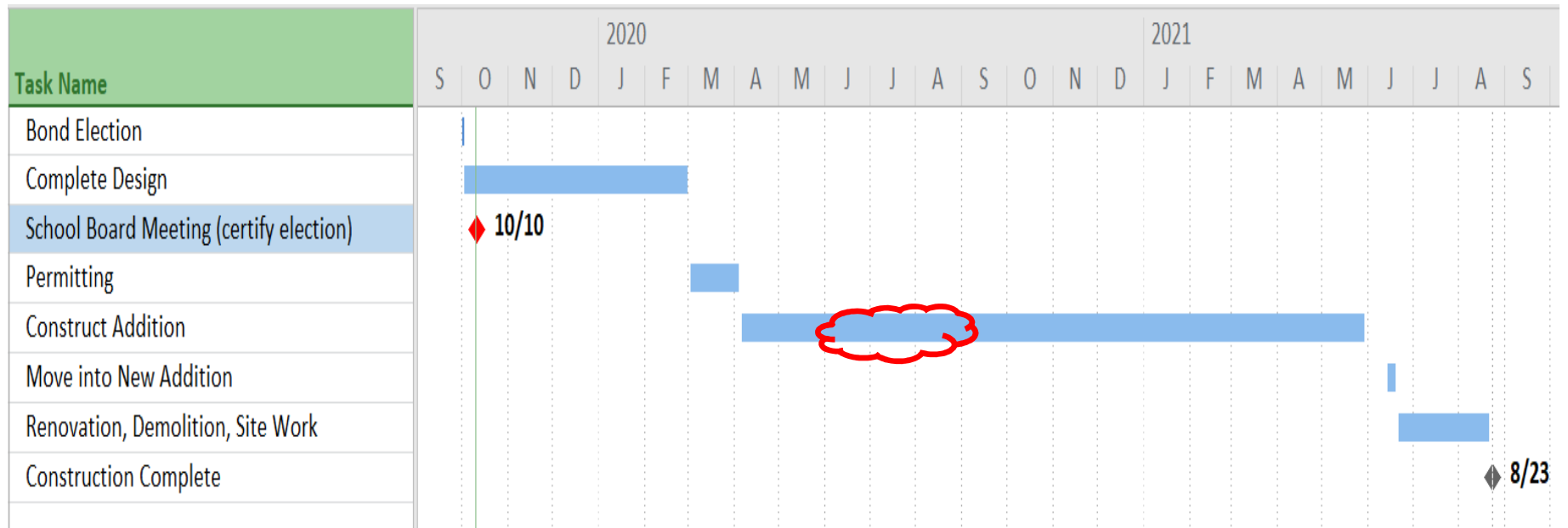


Schedule: Design

CONTINUE DESIGN WORK	OCTOBER 2, 2019
COMPLETE DD LEVEL DOCUMENTS (65%).....	NOVEMBER 30, 2019
COMPLETE CD LEVEL DOCUMENTS (95%).....	JANUARY 31, 2020
COMPLETE CD LEVEL DOCUMENTS (100%).....	FEBRUARY 28, 2020
ISSUE FOR PERMIT	MARCH 1, 2020
SECURE BUILDING PERMIT	MARCH 31, 2020



Schedule: Construction Summer 2020



Budget

- Each month we will review the total project budget.
- Contingency will be reviewed each month.
- This month, no changes have occurred and the project budget is attached.



Communication

Community

- Monthly Reports
- Public Meeting 1st wk December to review design

Teachers & Staff

- DropBox invitations
- Design reviews and tabletop reviews
- Model images
- Facilities Committee
- Bond Project Committee

Students & Parents

- Monthly Reports
- Student Council meetings
- APC meetings
- Public Meeting 1st week of December to review design



Anderson Bond Project Monthly Project Report

October | Karen Hedglin



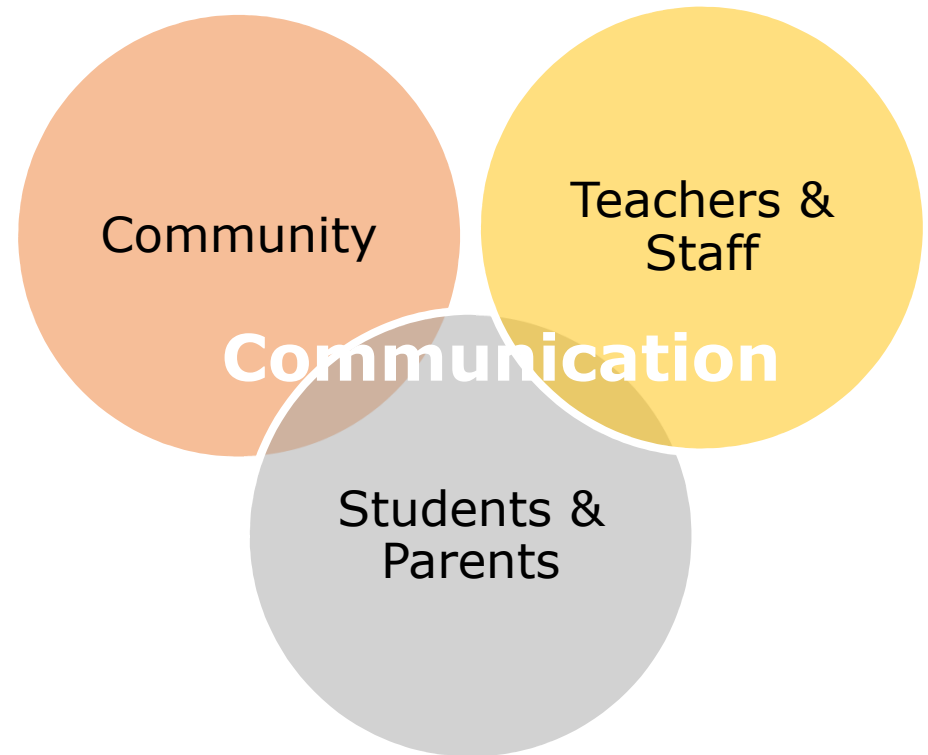
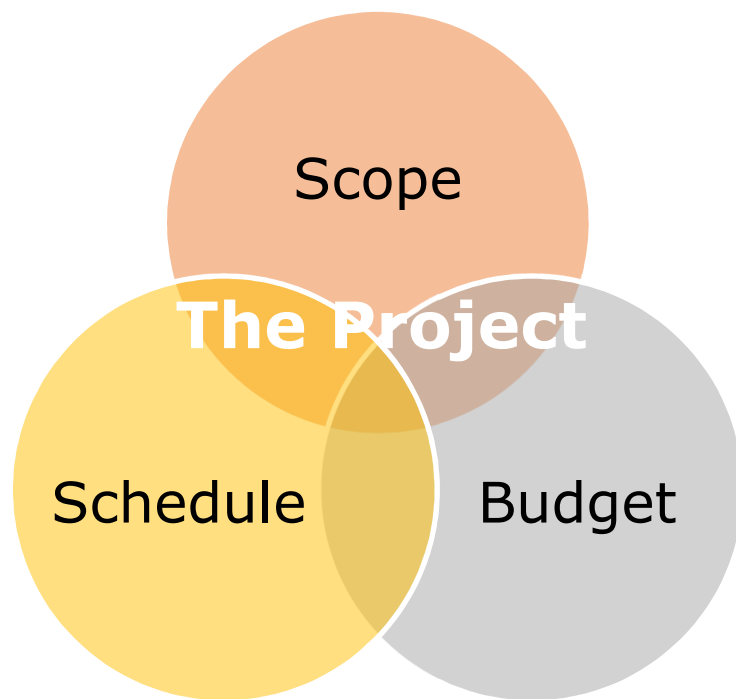
Process

The Bond Has Passed. What Happens Next?

- Election Canvass/Bond Sales
- Contracts - November
- Design process continues
- Construction planning continues
- Communication ongoing, takes a new shape
 - Bond Project Committee
 - Public Meetings: December and March
 - STEM Opportunities

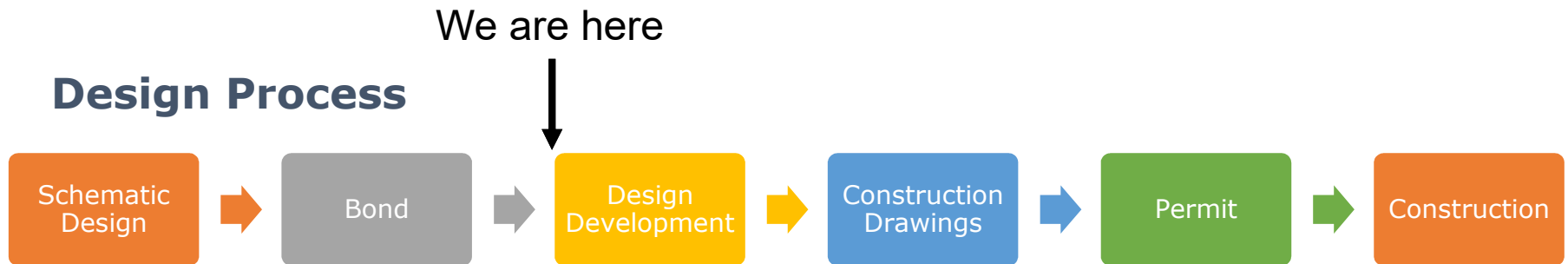


Report Overview



Scope

Design Process



- DropBox Site setup
- Wed Oct. 16th "Office Hours" 11am-1pm table top review
- Design Review Comment Log
- We are now entering the rinse and repeat part of design, where we draw/get feedback/draw again, then cost estimate. We true up to the budget at each design stage, then do it all over again.



Design Review Comment Log

REVIEW COMMENT LOG/ISSUE TRACKER

#	DWG	RM #	Description	Initials	Date	Response	Initials	Closed	Date Closed
46			Concern re: office being replaced at K/1 wing by custodial/storage.	Oriet	8/26/2016	Current office in middle school locker area will remain for this use. 9/15 - Removed one section of bleachers at gym south wall to accommodate office space and storage space lost with kitchen freezer relocation.	KH	✓	9/15/2016
47			Will new windows at mezzanine/specialist rooms be operable?	Hendrickson	8/26/2016	Depends on construction of CMU wall and location of bond beams, along with adjacent roof height. Awaiting DD drawing set for resolution. 9/15 - Two high windows will be included in the teacher workroom. They will not be operable.	KH	✓	9/15/2016
48			Will there be a running track at the gym?	O'Brien	8/26/2016	Yes, there will be a roughly 9' wide concrete floor track/pathway around the railing at the mezzanine. Community use will be encouraged, with access provided by an elevator or stairs once they pass through the front entrance and check in. Staff and student use will also be encouraged.	KH	✓	8/30/2016



Scope

- Music room and stage raised floor removal
- Effluent sampling 4-6 weeks
- Review with State Building Official has been requested
- County Road coordination will begin this month
- NWE coordination will also begin this month



STEM Ideas

STEM Ideas: Book-Based for Younger Students

- Build a Bridge for 21 Elephants – Brooklyn Bridge, story time, kit
- Roberto, the Insect Architect. Build a cardboard city.
- Egyptian Architecture – build a pyramid with sugar cubes.
- Three Little Pigs Challenge – Select a house type and build it.
- Rosie Revere, Engineer
- Iggy Peck, Architect



STEM Ideas

- Why do you measure sidewalks in square feet, but order and pay for concrete in cubic yards? How do you figure out how much you need? MATH
- How can a 3D model tell you where to put steel columns and ductwork? TECHNOLOGY
- How do you organize a construction project? MATH, TECHNOLOGY, ENGINEERING
- What are taxes? How do you know how much taxes each family has to pay? How does our project cost get paid for by the community? MATH, TECHNOLOGY
- Why does concrete get hot after you place it? How hot does it get? How do you make concrete? SCIENCE, CHEMISTRY, MATH



STEM Ideas

- What is energy? Where does it come from? How much does each continent have? How much does each continent need? How does it move from one place to the other? MATH, SCIENCE, TECHNOLOGY
- How can we use math to predict how strong the roof needs to be on the new gym to hold the average snow that we receive in the winter? MATH, SCIENCE, TECHNOLOGY
- How do you know where the corners of the building go? How do you know the wall is straight? Use a survey instrument to find the new corner of the school. MATH, SCIENCE, TECH, ENGR
- How much energy will our new building use? What does that cost? MATH, TECHNOLOGY, SCIENCE



STEM Ideas

- How do you draw a building? How do you read the drawings?
MATH, TECHNOLOGY, ENGR
- How do you communicate complex ideas using drawings, words, and images? TECHNOLOGY, ENGR, TECHNICAL WRITING
- What is a brick made of? How do you make a brick? How many people touch it from its materials to when it goes into a wall?
SCIENCE, MATH, ENGR, TECHNOLOGY
- Why do you wear a hard hat? Why is safety so important on a construction site? What injuries are unique to construction?

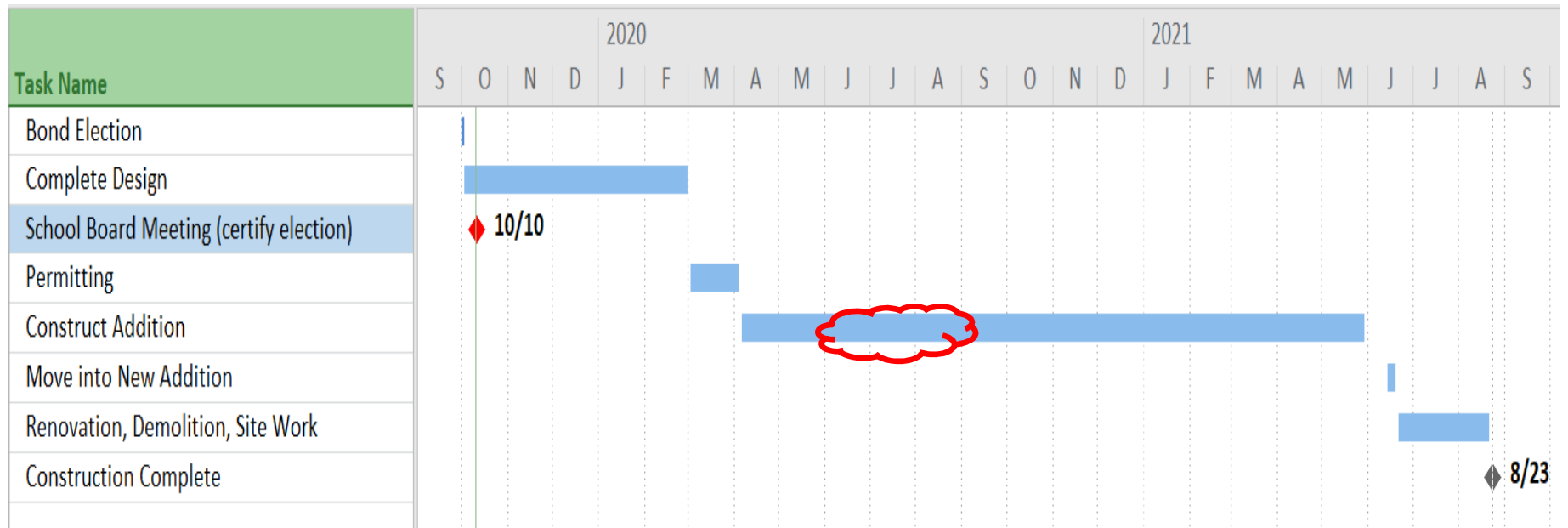


Schedule: Design

CONTINUE DESIGN WORK	OCTOBER 2, 2019
COMPLETE DD LEVEL DOCUMENTS (65%).....	NOVEMBER 30, 2019
COMPLETE CD LEVEL DOCUMENTS (95%).....	JANUARY 31, 2020
COMPLETE CD LEVEL DOCUMENTS (100%).....	FEBRUARY 28, 2020
ISSUE FOR PERMIT	MARCH 1, 2020
SECURE BUILDING PERMIT	MARCH 31, 2020



Schedule: Construction Summer 2020



Budget

- Each month we will review the total project budget.
- Contingency will be reviewed each month.
- This month, no changes have occurred and the project budget is attached.



Communication

Community

- Monthly Reports
- Public Meeting 1st wk December to review design

Teachers & Staff

- DropBox invitations
- Design reviews and tabletop reviews
- Model images
- Facilities Committee
- Bond Project Committee

Students & Parents

- Monthly Reports
- Student Council meetings
- APC meetings
- Public Meeting 1st week of December to review design



Anderson Bond Project Monthly Project Report

October | Karen Hedglin



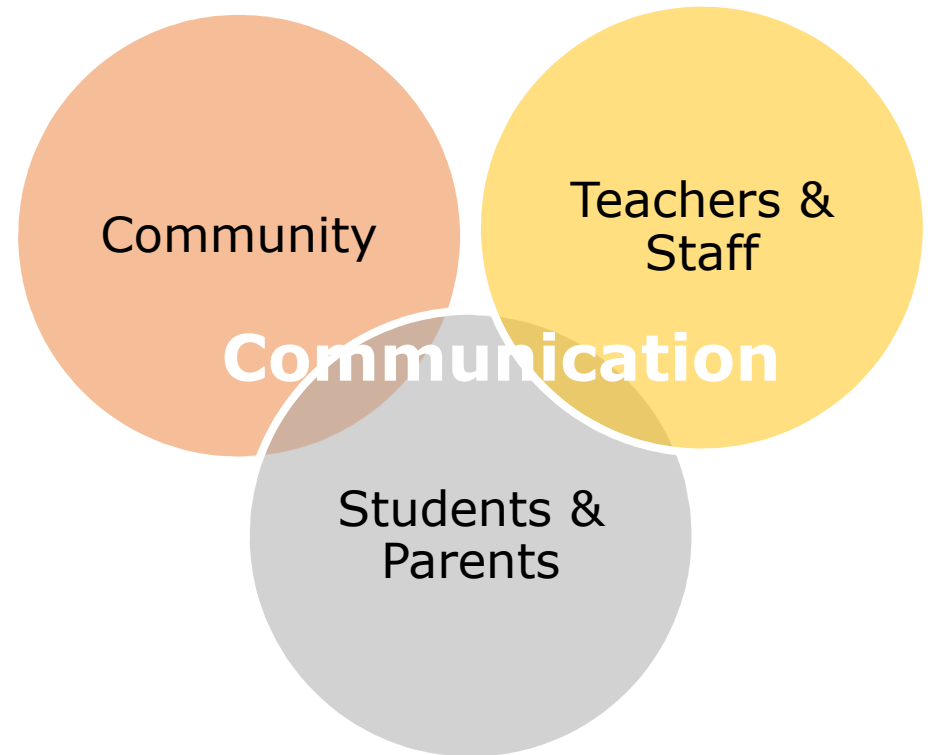
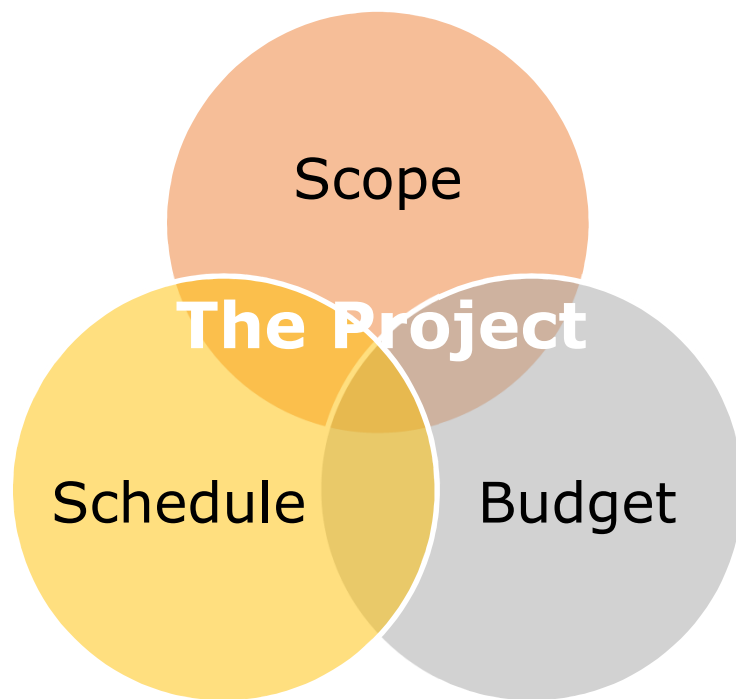
Process

The Bond Has Passed. What Happens Next?

- Election Canvass/Bond Sales
- Contracts - November
- Design process continues
- Construction planning continues
- Communication ongoing, takes a new shape
 - Bond Project Committee
 - Public Meetings: December and March
 - STEM Opportunities

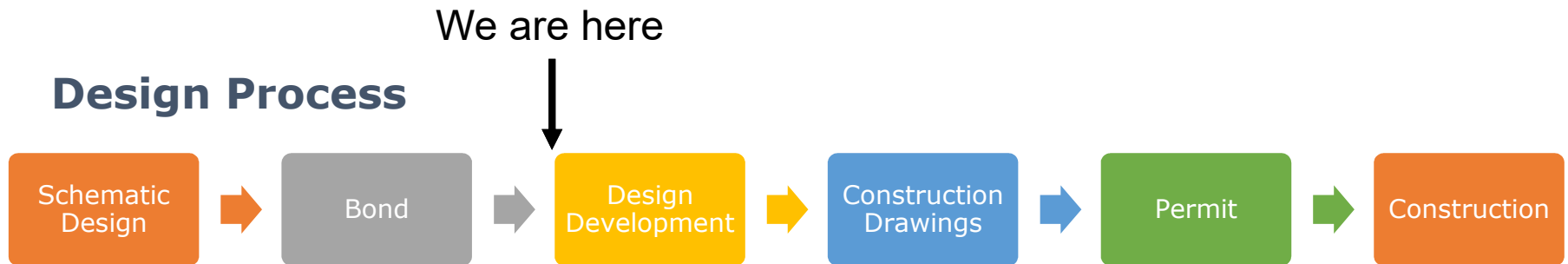


Report Overview



Scope

Design Process



- DropBox Site setup
- Wed Oct. 16th “Office Hours” 11am-1pm table top review
- Design Review Comment Log
- We are now entering the rinse and repeat part of design, where we draw/get feedback/draw again, then cost estimate. We true up to the budget at each design stage, then do it all over again.



Design Review Comment Log

REVIEW COMMENT LOG/ISSUE TRACKER

#	DWG	RM #	Description	Initials	Date	Response	Initials	Closed	Date Closed
46			Concern re: office being replaced at K/1 wing by custodial/storage.	Oriet	8/26/2016	Current office in middle school locker area will remain for this use. 9/15 - Removed one section of bleachers at gym south wall to accommodate office space and storage space lost with kitchen freezer relocation.	KH	✓	9/15/2016
47			Will new windows at mezzanine/specialist rooms be operable?	Hendrickson	8/26/2016	Depends on construction of CMU wall and location of bond beams, along with adjacent roof height. Awaiting DD drawing set for resolution. 9/15 - Two high windows will be included in the teacher workroom. They will not be operable.	KH	✓	9/15/2016
48			Will there be a running track at the gym?	O'Brien	8/26/2016	Yes, there will be a roughly 9' wide concrete floor track/pathway around the railing at the mezzanine. Community use will be encouraged, with access provided by an elevator or stairs once they pass through the front entrance and check in. Staff and student use will also be encouraged.	KH	✓	8/30/2016



Scope

- Music room and stage raised floor removal
- Effluent sampling 4-6 weeks
- Review with State Building Official has been requested
- County Road coordination will begin this month
- NWE coordination will also begin this month



STEM Ideas

STEM Ideas: Book-Based for Younger Students

- Build a Bridge for 21 Elephants – Brooklyn Bridge, story time, kit
- Roberto, the Insect Architect. Build a cardboard city.
- Egyptian Architecture – build a pyramid with sugar cubes.
- Three Little Pigs Challenge – Select a house type and build it.
- Rosie Revere, Engineer
- Iggy Peck, Architect



STEM Ideas

- Why do you measure sidewalks in square feet, but order and pay for concrete in cubic yards? How do you figure out how much you need? MATH
- How can a 3D model tell you where to put steel columns and ductwork? TECHNOLOGY
- How do you organize a construction project? MATH, TECHNOLOGY, ENGINEERING
- What are taxes? How do you know how much taxes each family has to pay? How does our project cost get paid for by the community? MATH, TECHNOLOGY
- Why does concrete get hot after you place it? How hot does it get? How do you make concrete? SCIENCE, CHEMISTRY, MATH



STEM Ideas

- What is energy? Where does it come from? How much does each continent have? How much does each continent need? How does it move from one place to the other? MATH, SCIENCE, TECHNOLOGY
- How can we use math to predict how strong the roof needs to be on the new gym to hold the average snow that we receive in the winter? MATH, SCIENCE, TECHNOLOGY
- How do you know where the corners of the building go? How do you know the wall is straight? Use a survey instrument to find the new corner of the school. MATH, SCIENCE, TECH, ENGR
- How much energy will our new building use? What does that cost? MATH, TECHNOLOGY, SCIENCE



STEM Ideas

- How do you draw a building? How do you read the drawings?
MATH, TECHNOLOGY, ENGR
- How do you communicate complex ideas using drawings, words, and images? TECHNOLOGY, ENGR, TECHNICAL WRITING
- What is a brick made of? How do you make a brick? How many people touch it from its materials to when it goes into a wall?
SCIENCE, MATH, ENGR, TECHNOLOGY
- Why do you wear a hard hat? Why is safety so important on a construction site? What injuries are unique to construction?

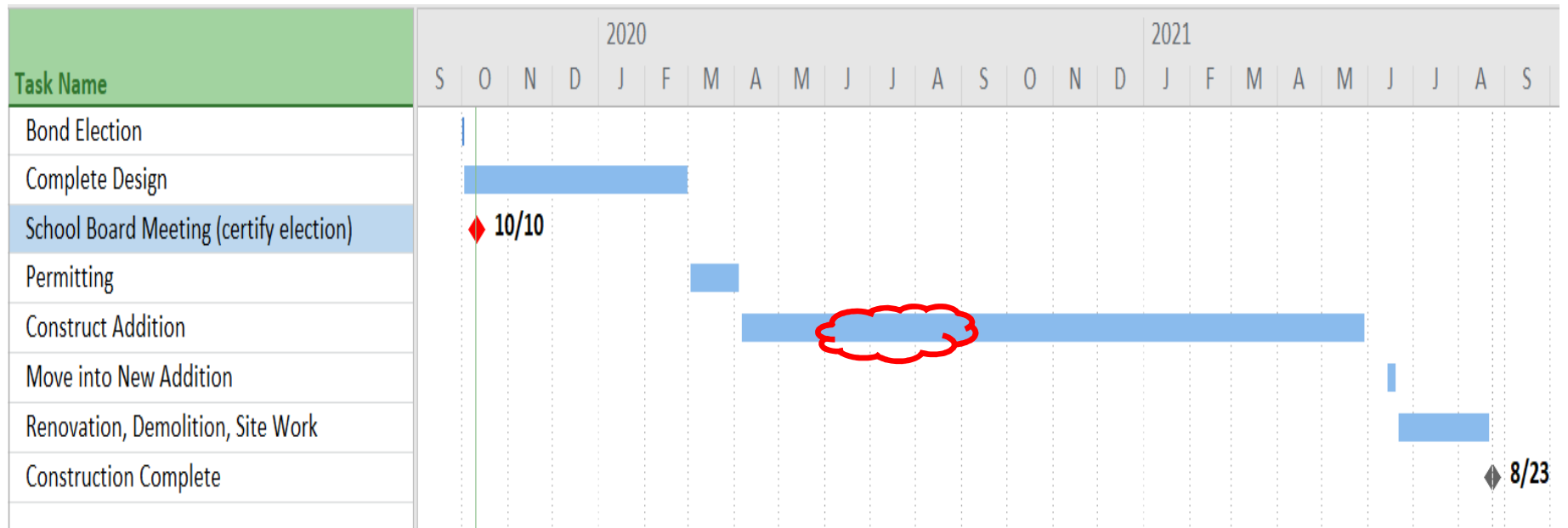


Schedule: Design

CONTINUE DESIGN WORK	OCTOBER 2, 2019
COMPLETE DD LEVEL DOCUMENTS (65%).....	NOVEMBER 30, 2019
COMPLETE CD LEVEL DOCUMENTS (95%).....	JANUARY 31, 2020
COMPLETE CD LEVEL DOCUMENTS (100%).....	FEBRUARY 28, 2020
ISSUE FOR PERMIT	MARCH 1, 2020
SECURE BUILDING PERMIT	MARCH 31, 2020



Schedule: Construction Summer 2020



Budget

- Each month we will review the total project budget.
- Contingency will be reviewed each month.
- This month, no changes have occurred and the project budget is attached.



Communication

Community

- Monthly Reports
- Public Meeting 1st wk December to review design

Teachers & Staff

- DropBox invitations
- Design reviews and tabletop reviews
- Model images
- Facilities Committee
- Bond Project Committee

Students & Parents

- Monthly Reports
- Student Council meetings
- APC meetings
- Public Meeting 1st week of December to review design



Anderson Bond Project Monthly Project Report

October | Karen Hedglin



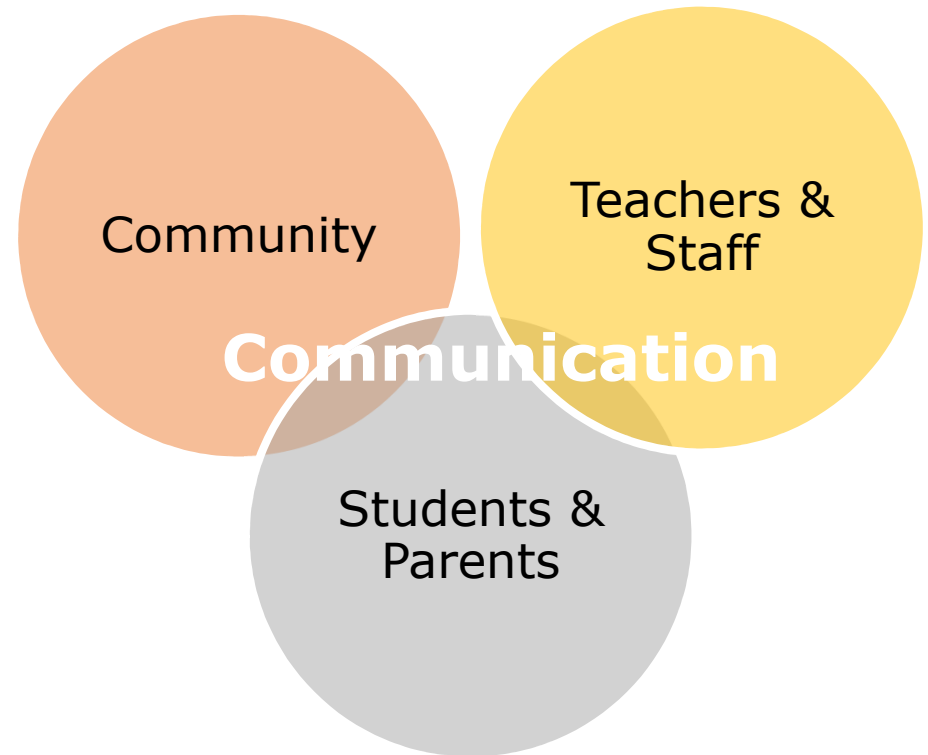
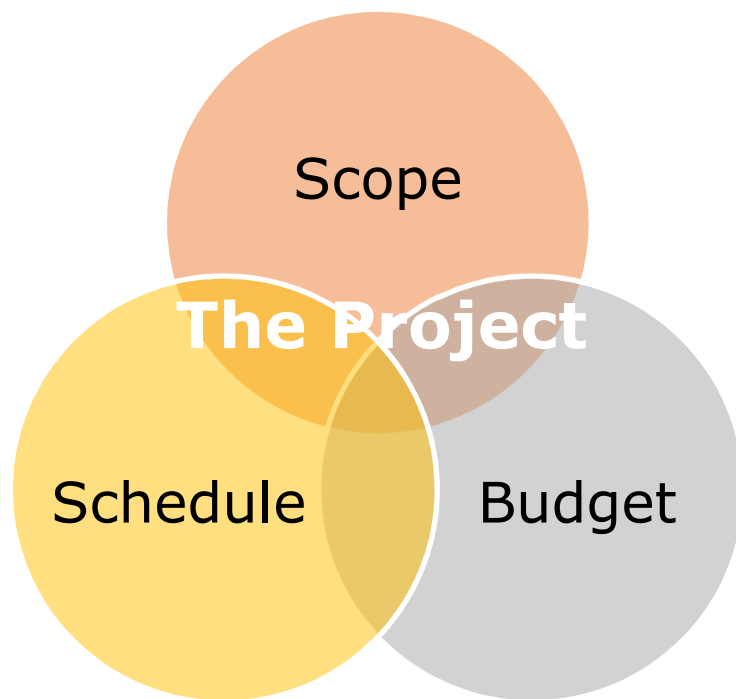
Process

The Bond Has Passed. What Happens Next?

- Election Canvass/Bond Sales
- Contracts - November
- Design process continues
- Construction planning continues
- Communication ongoing, takes a new shape
 - Bond Project Committee
 - Public Meetings: December and March
 - STEM Opportunities

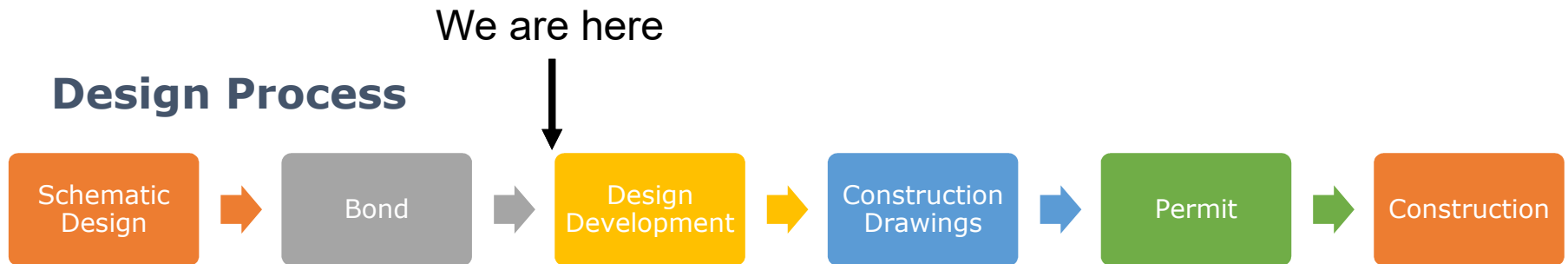


Report Overview



Scope

Design Process



- DropBox Site setup
- Wed Oct. 16th "Office Hours" 11am-1pm table top review
- Design Review Comment Log
- We are now entering the rinse and repeat part of design, where we draw/get feedback/draw again, then cost estimate. We true up to the budget at each design stage, then do it all over again.



Design Review Comment Log

REVIEW COMMENT LOG/ISSUE TRACKER

#	DWG	RM #	Description	Initials	Date	Response	Initials	Closed	Date Closed
46			Concern re: office being replaced at K/1 wing by custodial/storage.	Oriet	8/26/2016	Current office in middle school locker area will remain for this use. 9/15 - Removed one section of bleachers at gym south wall to accommodate office space and storage space lost with kitchen freezer relocation.	KH	✓	9/15/2016
47			Will new windows at mezzanine/specialist rooms be operable?	Hendrickson	8/26/2016	Depends on construction of CMU wall and location of bond beams, along with adjacent roof height. Awaiting DD drawing set for resolution. 9/15 - Two high windows will be included in the teacher workroom. They will not be operable.	KH	✓	9/15/2016
48			Will there be a running track at the gym?	O'Brien	8/26/2016	Yes, there will be a roughly 9' wide concrete floor track/pathway around the railing at the mezzanine. Community use will be encouraged, with access provided by an elevator or stairs once they pass through the front entrance and check in. Staff and student use will also be encouraged.	KH	✓	8/30/2016



Scope

- Music room and stage raised floor removal
- Effluent sampling 4-6 weeks
- Review with State Building Official has been requested
- County Road coordination will begin this month
- NWE coordination will also begin this month



STEM Ideas

STEM Ideas: Book-Based for Younger Students

- Build a Bridge for 21 Elephants – Brooklyn Bridge, story time, kit
- Roberto, the Insect Architect. Build a cardboard city.
- Egyptian Architecture – build a pyramid with sugar cubes.
- Three Little Pigs Challenge – Select a house type and build it.
- Rosie Revere, Engineer
- Iggy Peck, Architect



STEM Ideas

- Why do you measure sidewalks in square feet, but order and pay for concrete in cubic yards? How do you figure out how much you need? MATH
- How can a 3D model tell you where to put steel columns and ductwork? TECHNOLOGY
- How do you organize a construction project? MATH, TECHNOLOGY, ENGINEERING
- What are taxes? How do you know how much taxes each family has to pay? How does our project cost get paid for by the community? MATH, TECHNOLOGY
- Why does concrete get hot after you place it? How hot does it get? How do you make concrete? SCIENCE, CHEMISTRY, MATH



STEM Ideas

- What is energy? Where does it come from? How much does each continent have? How much does each continent need? How does it move from one place to the other? MATH, SCIENCE, TECHNOLOGY
- How can we use math to predict how strong the roof needs to be on the new gym to hold the average snow that we receive in the winter? MATH, SCIENCE, TECHNOLOGY
- How do you know where the corners of the building go? How do you know the wall is straight? Use a survey instrument to find the new corner of the school. MATH, SCIENCE, TECH, ENGR
- How much energy will our new building use? What does that cost? MATH, TECHNOLOGY, SCIENCE



STEM Ideas

- How do you draw a building? How do you read the drawings?
MATH, TECHNOLOGY, ENGR
- How do you communicate complex ideas using drawings, words, and images? TECHNOLOGY, ENGR, TECHNICAL WRITING
- What is a brick made of? How do you make a brick? How many people touch it from its materials to when it goes into a wall?
SCIENCE, MATH, ENGR, TECHNOLOGY
- Why do you wear a hard hat? Why is safety so important on a construction site? What injuries are unique to construction?

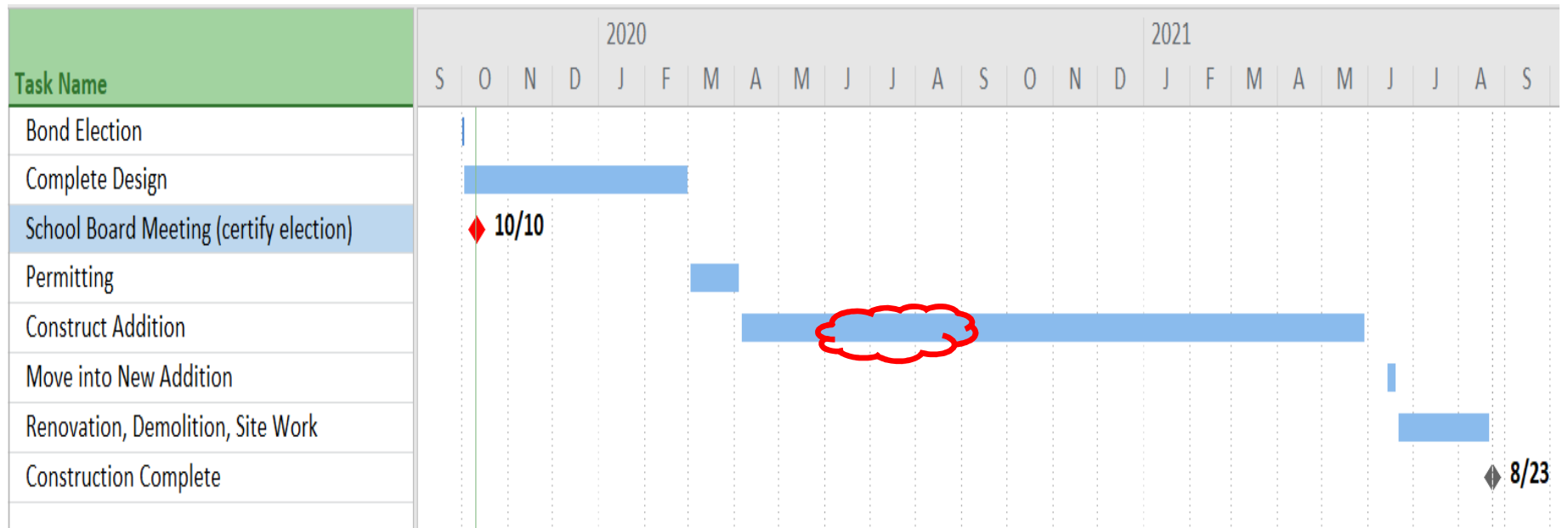


Schedule: Design

CONTINUE DESIGN WORK	OCTOBER 2, 2019
COMPLETE DD LEVEL DOCUMENTS (65%).....	NOVEMBER 30, 2019
COMPLETE CD LEVEL DOCUMENTS (95%).....	JANUARY 31, 2020
COMPLETE CD LEVEL DOCUMENTS (100%).....	FEBRUARY 28, 2020
ISSUE FOR PERMIT	MARCH 1, 2020
SECURE BUILDING PERMIT	MARCH 31, 2020



Schedule: Construction Summer 2020



Budget

- Each month we will review the total project budget.
- Contingency will be reviewed each month.
- This month, no changes have occurred and the project budget is attached.



Communication

Community

- Monthly Reports
- Public Meeting 1st wk December to review design

Teachers & Staff

- DropBox invitations
- Design reviews and tabletop reviews
- Model images
- Facilities Committee
- Bond Project Committee

Students & Parents

- Monthly Reports
- Student Council meetings
- APC meetings
- Public Meeting 1st week of December to review design



Anderson Bond Project Monthly Project Report

October | Karen Hedglin



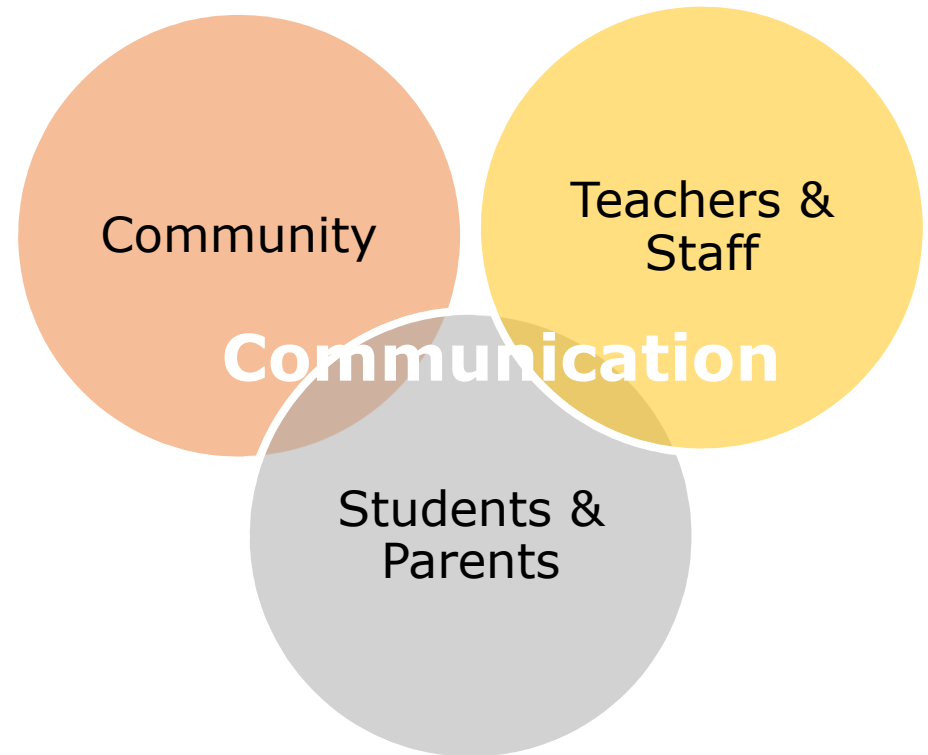
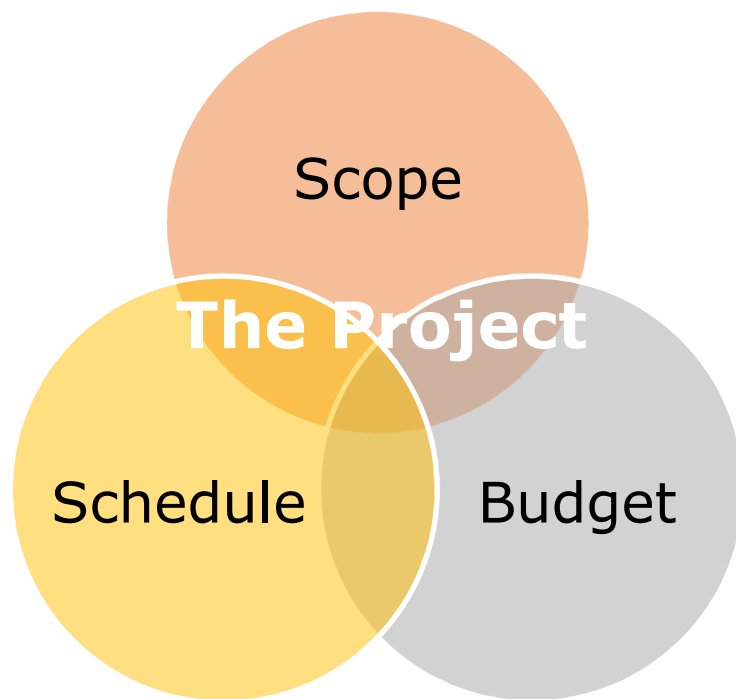
Process

The Bond Has Passed. What Happens Next?

- Election Canvass/Bond Sales
- Contracts - November
- Design process continues
- Construction planning continues
- Communication ongoing, takes a new shape
 - Bond Project Committee
 - Public Meetings: December and March
 - STEM Opportunities

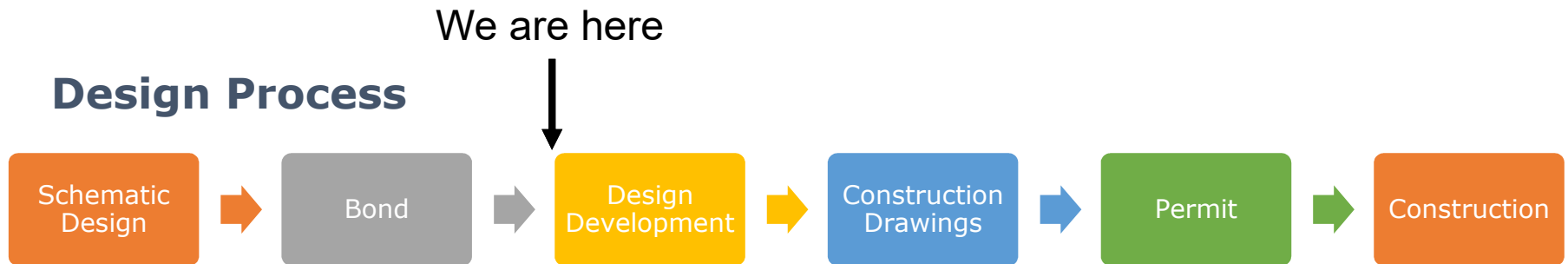


Report Overview



Scope

Design Process



- DropBox Site setup
- Wed Oct. 16th “Office Hours” 11am-1pm table top review
- Design Review Comment Log
- We are now entering the rinse and repeat part of design, where we draw/get feedback/draw again, then cost estimate. We true up to the budget at each design stage, then do it all over again.



Design Review Comment Log

REVIEW COMMENT LOG/ISSUE TRACKER

#	DWG	RM #	Description	Initials	Date	Response	Initials	Closed	Date Closed
46			Concern re: office being replaced at K/1 wing by custodial/storage.	Oriet	8/26/2016	Current office in middle school locker area will remain for this use. 9/15 - Removed one section of bleachers at gym south wall to accommodate office space and storage space lost with kitchen freezer relocation.	KH	✓	9/15/2016
47			Will new windows at mezzanine/specialist rooms be operable?	Hendrickson	8/26/2016	Depends on construction of CMU wall and location of bond beams, along with adjacent roof height. Awaiting DD drawing set for resolution. 9/15 - Two high windows will be included in the teacher workroom. They will not be operable.	KH	✓	9/15/2016
48			Will there be a running track at the gym?	O'Brien	8/26/2016	Yes, there will be a roughly 9' wide concrete floor track/pathway around the railing at the mezzanine. Community use will be encouraged, with access provided by an elevator or stairs once they pass through the front entrance and check in. Staff and student use will also be encouraged.	KH	✓	8/30/2016



Scope

- Music room and stage raised floor removal
- Effluent sampling 4-6 weeks
- Review with State Building Official has been requested
- County Road coordination will begin this month
- NWE coordination will also begin this month



STEM Ideas

STEM Ideas: Book-Based for Younger Students

- Build a Bridge for 21 Elephants – Brooklyn Bridge, story time, kit
- Roberto, the Insect Architect. Build a cardboard city.
- Egyptian Architecture – build a pyramid with sugar cubes.
- Three Little Pigs Challenge – Select a house type and build it.
- Rosie Revere, Engineer
- Iggy Peck, Architect



STEM Ideas

- Why do you measure sidewalks in square feet, but order and pay for concrete in cubic yards? How do you figure out how much you need? MATH
- How can a 3D model tell you where to put steel columns and ductwork? TECHNOLOGY
- How do you organize a construction project? MATH, TECHNOLOGY, ENGINEERING
- What are taxes? How do you know how much taxes each family has to pay? How does our project cost get paid for by the community? MATH, TECHNOLOGY
- Why does concrete get hot after you place it? How hot does it get? How do you make concrete? SCIENCE, CHEMISTRY, MATH



STEM Ideas

- What is energy? Where does it come from? How much does each continent have? How much does each continent need? How does it move from one place to the other? MATH, SCIENCE, TECHNOLOGY
- How can we use math to predict how strong the roof needs to be on the new gym to hold the average snow that we receive in the winter? MATH, SCIENCE, TECHNOLOGY
- How do you know where the corners of the building go? How do you know the wall is straight? Use a survey instrument to find the new corner of the school. MATH, SCIENCE, TECH, ENGR
- How much energy will our new building use? What does that cost? MATH, TECHNOLOGY, SCIENCE



STEM Ideas

- How do you draw a building? How do you read the drawings?
MATH, TECHNOLOGY, ENGR
- How do you communicate complex ideas using drawings, words, and images? TECHNOLOGY, ENGR, TECHNICAL WRITING
- What is a brick made of? How do you make a brick? How many people touch it from its materials to when it goes into a wall?
SCIENCE, MATH, ENGR, TECHNOLOGY
- Why do you wear a hard hat? Why is safety so important on a construction site? What injuries are unique to construction?

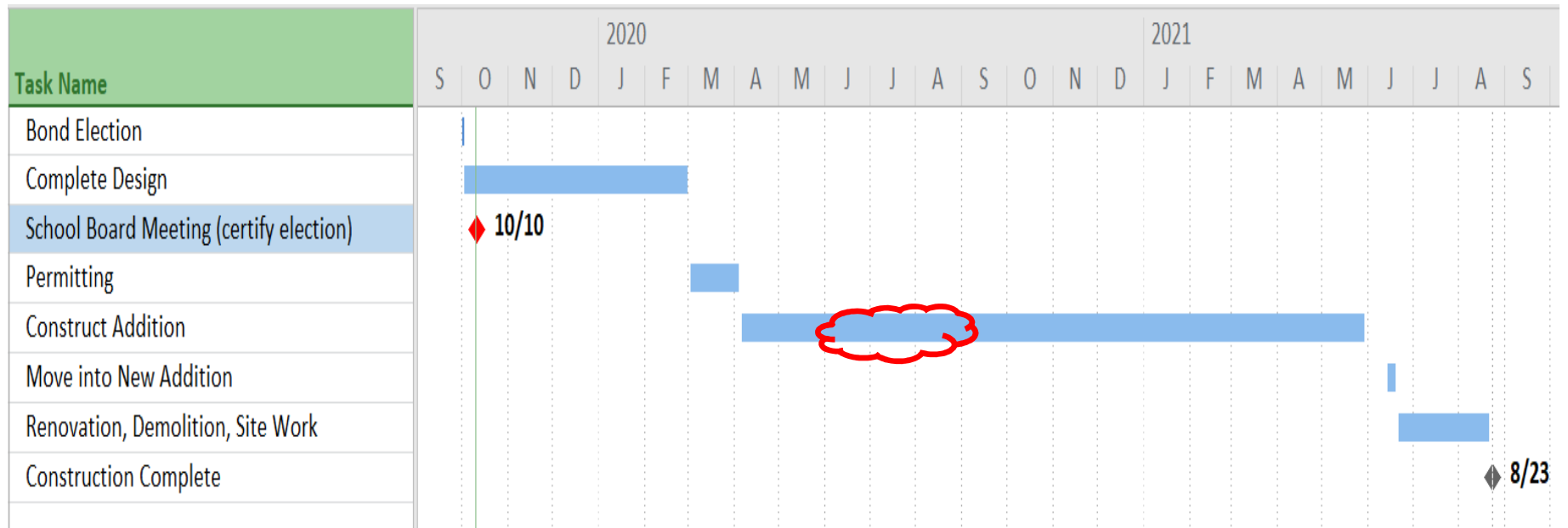


Schedule: Design

CONTINUE DESIGN WORK	OCTOBER 2, 2019
COMPLETE DD LEVEL DOCUMENTS (65%).....	NOVEMBER 30, 2019
COMPLETE CD LEVEL DOCUMENTS (95%).....	JANUARY 31, 2020
COMPLETE CD LEVEL DOCUMENTS (100%).....	FEBRUARY 28, 2020
ISSUE FOR PERMIT	MARCH 1, 2020
SECURE BUILDING PERMIT	MARCH 31, 2020



Schedule: Construction Summer 2020



Budget

- Each month we will review the total project budget.
- Contingency will be reviewed each month.
- This month, no changes have occurred and the project budget is attached.



Communication

Community

- Monthly Reports
- Public Meeting 1st wk December to review design

Teachers & Staff

- DropBox invitations
- Design reviews and tabletop reviews
- Model images
- Facilities Committee
- Bond Project Committee

Students & Parents

- Monthly Reports
- Student Council meetings
- APC meetings
- Public Meeting 1st week of December to review design



Anderson Bond Project Monthly Project Report

October | Karen Hedglin



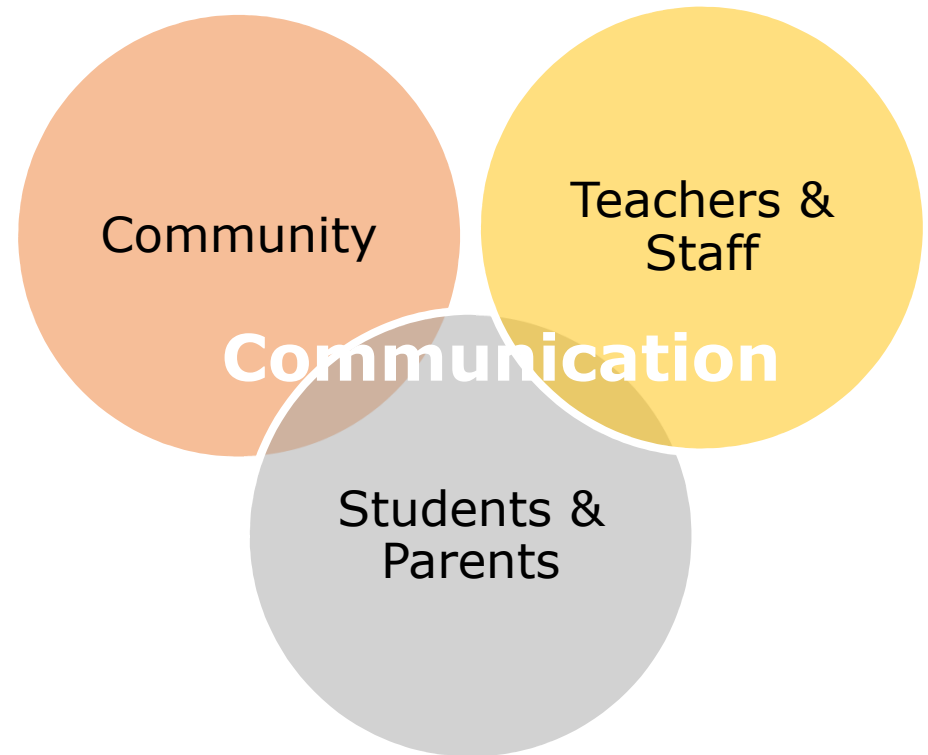
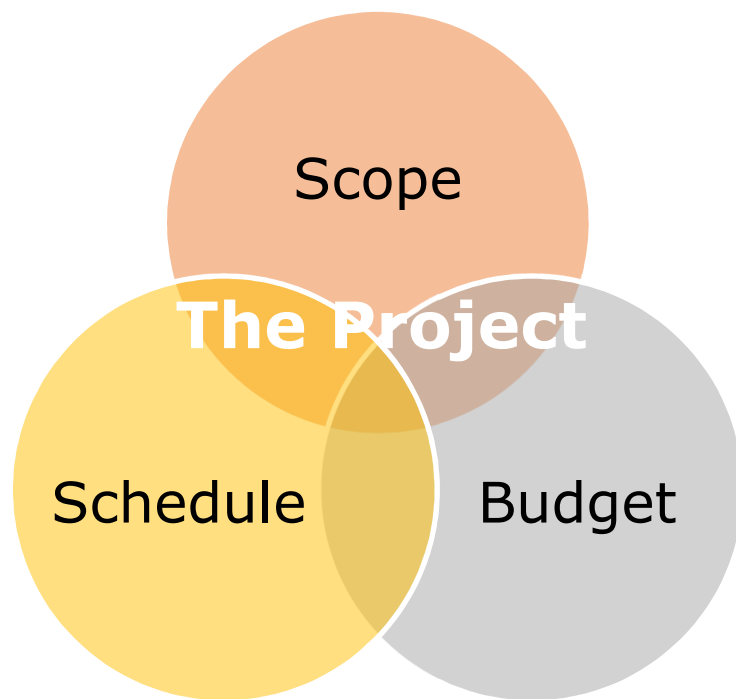
Process

The Bond Has Passed. What Happens Next?

- Election Canvass/Bond Sales
- Contracts - November
- Design process continues
- Construction planning continues
- Communication ongoing, takes a new shape
 - Bond Project Committee
 - Public Meetings: December and March
 - STEM Opportunities

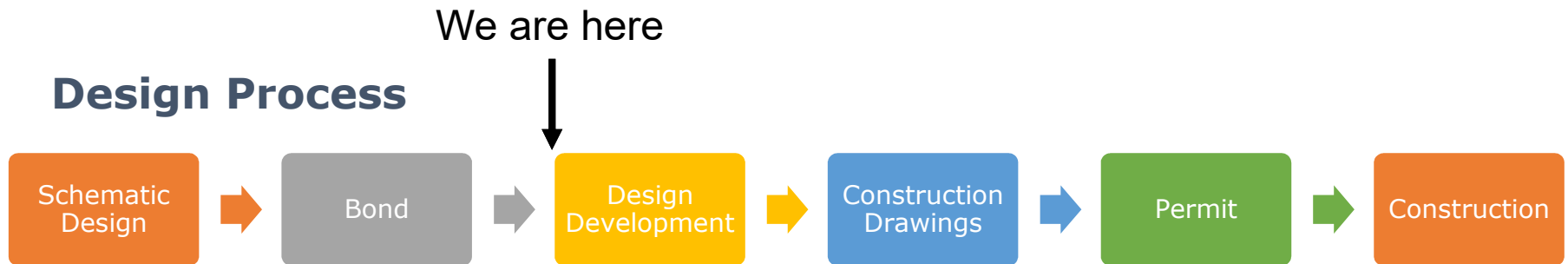


Report Overview



Scope

Design Process



- DropBox Site setup
- Wed Oct. 16th “Office Hours” 11am-1pm table top review
- Design Review Comment Log
- We are now entering the rinse and repeat part of design, where we draw/get feedback/draw again, then cost estimate. We true up to the budget at each design stage, then do it all over again.



Design Review Comment Log

REVIEW COMMENT LOG/ISSUE TRACKER

#	DWG	RM #	Description	Initials	Date	Response	Initials	Closed	Date Closed
46			Concern re: office being replaced at K/1 wing by custodial/storage.	Oriet	8/26/2016	Current office in middle school locker area will remain for this use. 9/15 - Removed one section of bleachers at gym south wall to accommodate office space and storage space lost with kitchen freezer relocation.	KH	✓	9/15/2016
47			Will new windows at mezzanine/specialist rooms be operable?	Hendrickson	8/26/2016	Depends on construction of CMU wall and location of bond beams, along with adjacent roof height. Awaiting DD drawing set for resolution. 9/15 - Two high windows will be included in the teacher workroom. They will not be operable.	KH	✓	9/15/2016
48			Will there be a running track at the gym?	O'Brien	8/26/2016	Yes, there will be a roughly 9' wide concrete floor track/pathway around the railing at the mezzanine. Community use will be encouraged, with access provided by an elevator or stairs once they pass through the front entrance and check in. Staff and student use will also be encouraged.	KH	✓	8/30/2016



Scope

- Music room and stage raised floor removal
- Effluent sampling 4-6 weeks
- Review with State Building Official has been requested
- County Road coordination will begin this month
- NWE coordination will also begin this month



STEM Ideas

STEM Ideas: Book-Based for Younger Students

- Build a Bridge for 21 Elephants – Brooklyn Bridge, story time, kit
- Roberto, the Insect Architect. Build a cardboard city.
- Egyptian Architecture – build a pyramid with sugar cubes.
- Three Little Pigs Challenge – Select a house type and build it.
- Rosie Revere, Engineer
- Iggy Peck, Architect



STEM Ideas

- Why do you measure sidewalks in square feet, but order and pay for concrete in cubic yards? How do you figure out how much you need? MATH
- How can a 3D model tell you where to put steel columns and ductwork? TECHNOLOGY
- How do you organize a construction project? MATH, TECHNOLOGY, ENGINEERING
- What are taxes? How do you know how much taxes each family has to pay? How does our project cost get paid for by the community? MATH, TECHNOLOGY
- Why does concrete get hot after you place it? How hot does it get? How do you make concrete? SCIENCE, CHEMISTRY, MATH



STEM Ideas

- What is energy? Where does it come from? How much does each continent have? How much does each continent need? How does it move from one place to the other? MATH, SCIENCE, TECHNOLOGY
- How can we use math to predict how strong the roof needs to be on the new gym to hold the average snow that we receive in the winter? MATH, SCIENCE, TECHNOLOGY
- How do you know where the corners of the building go? How do you know the wall is straight? Use a survey instrument to find the new corner of the school. MATH, SCIENCE, TECH, ENGR
- How much energy will our new building use? What does that cost? MATH, TECHNOLOGY, SCIENCE



STEM Ideas

- How do you draw a building? How do you read the drawings?
MATH, TECHNOLOGY, ENGR
- How do you communicate complex ideas using drawings, words, and images? TECHNOLOGY, ENGR, TECHNICAL WRITING
- What is a brick made of? How do you make a brick? How many people touch it from its materials to when it goes into a wall?
SCIENCE, MATH, ENGR, TECHNOLOGY
- Why do you wear a hard hat? Why is safety so important on a construction site? What injuries are unique to construction?

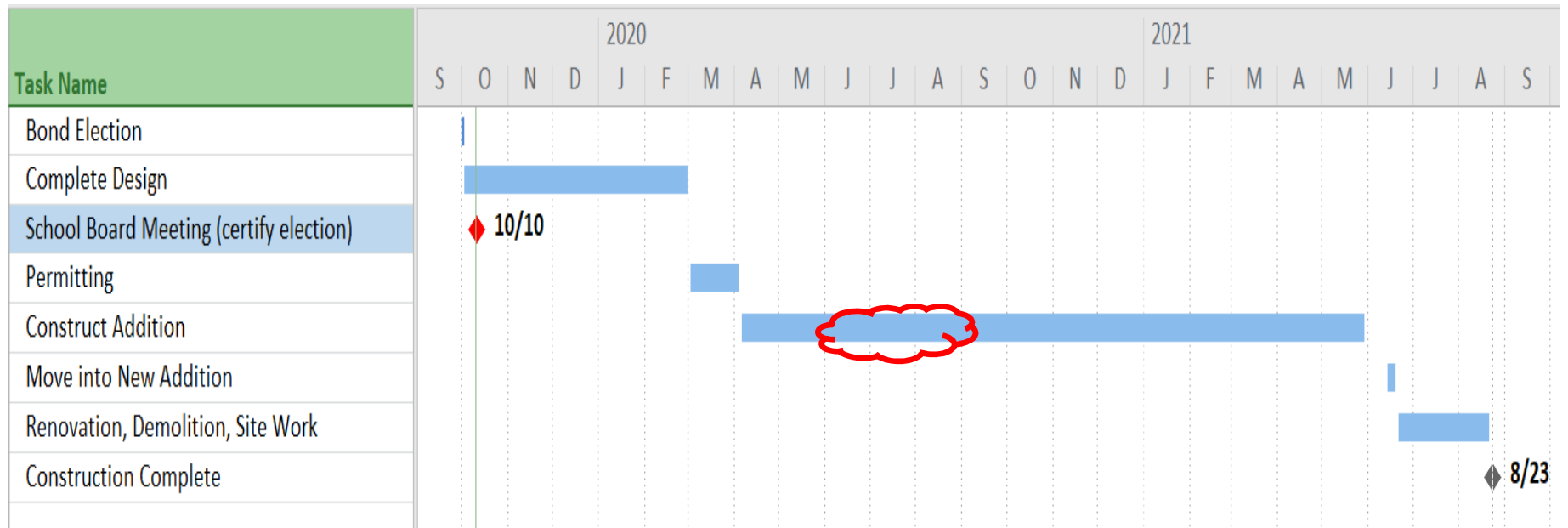


Schedule: Design

CONTINUE DESIGN WORK	OCTOBER 2, 2019
COMPLETE DD LEVEL DOCUMENTS (65%).....	NOVEMBER 30, 2019
COMPLETE CD LEVEL DOCUMENTS (95%).....	JANUARY 31, 2020
COMPLETE CD LEVEL DOCUMENTS (100%).....	FEBRUARY 28, 2020
ISSUE FOR PERMIT	MARCH 1, 2020
SECURE BUILDING PERMIT	MARCH 31, 2020



Schedule: Construction Summer 2020



Budget

- Each month we will review the total project budget.
- Contingency will be reviewed each month.
- This month, no changes have occurred and the project budget is attached.



Communication

Community

- Monthly Reports
- Public Meeting 1st wk December to review design

Teachers & Staff

- DropBox invitations
- Design reviews and tabletop reviews
- Model images
- Facilities Committee
- Bond Project Committee

Students & Parents

- Monthly Reports
- Student Council meetings
- APC meetings
- Public Meeting 1st week of December to review design



Anderson Bond Project Monthly Project Report

October | Karen Hedglin



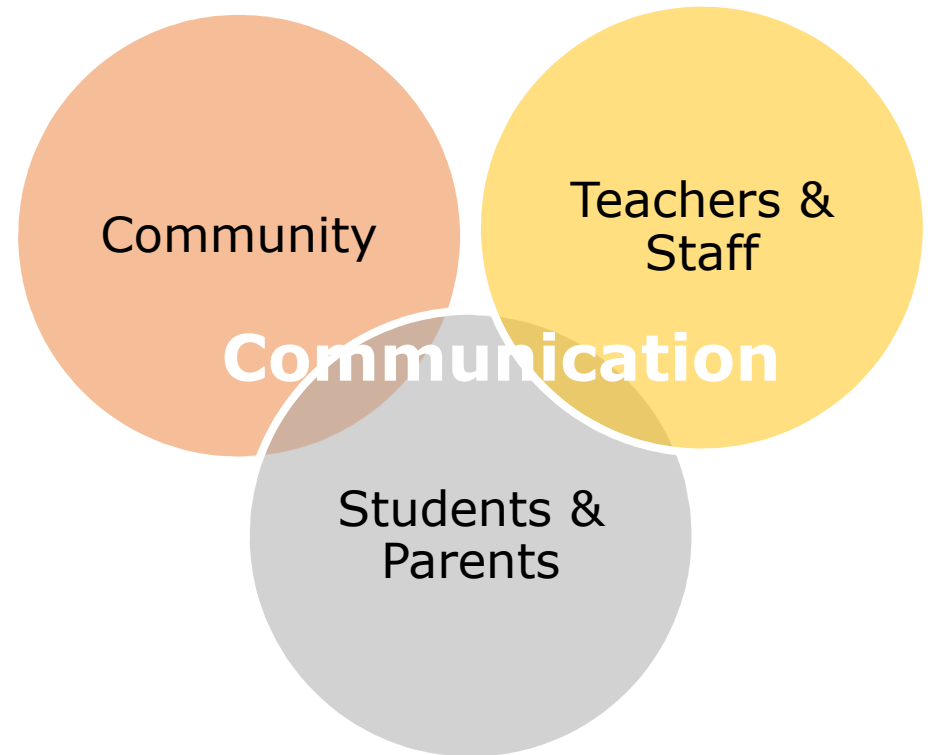
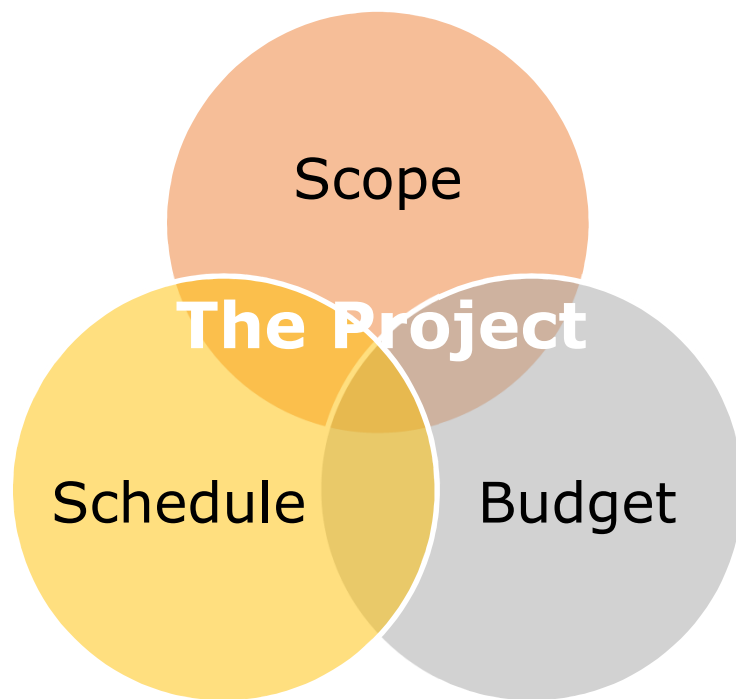
Process

The Bond Has Passed. What Happens Next?

- Election Canvass/Bond Sales
- Contracts - November
- Design process continues
- Construction planning continues
- Communication ongoing, takes a new shape
 - Bond Project Committee
 - Public Meetings: December and March
 - STEM Opportunities

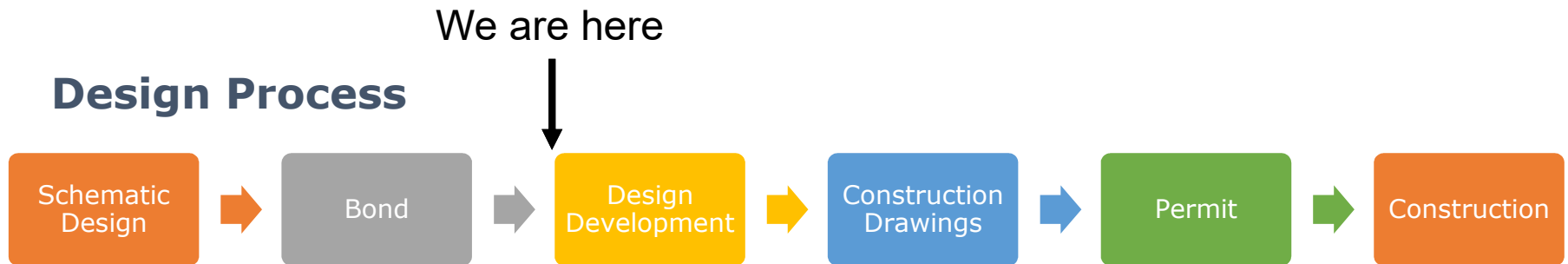


Report Overview



Scope

Design Process



- DropBox Site setup
- Wed Oct. 16th “Office Hours” 11am-1pm table top review
- Design Review Comment Log
- We are now entering the rinse and repeat part of design, where we draw/get feedback/draw again, then cost estimate. We true up to the budget at each design stage, then do it all over again.



Design Review Comment Log

REVIEW COMMENT LOG/ISSUE TRACKER

#	DWG	RM #	Description	Initials	Date	Response	Initials	Closed	Date Closed
46			Concern re: office being replaced at K/1 wing by custodial/storage.	Oriet	8/26/2016	Current office in middle school locker area will remain for this use. 9/15 - Removed one section of bleachers at gym south wall to accommodate office space and storage space lost with kitchen freezer relocation.	KH	✓	9/15/2016
47			Will new windows at mezzanine/specialist rooms be operable?	Hendrickson	8/26/2016	Depends on construction of CMU wall and location of bond beams, along with adjacent roof height. Awaiting DD drawing set for resolution. 9/15 - Two high windows will be included in the teacher workroom. They will not be operable.	KH	✓	9/15/2016
48			Will there be a running track at the gym?	O'Brien	8/26/2016	Yes, there will be a roughly 9' wide concrete floor track/pathway around the railing at the mezzanine. Community use will be encouraged, with access provided by an elevator or stairs once they pass through the front entrance and check in. Staff and student use will also be encouraged.	KH	✓	8/30/2016



Scope

- Music room and stage raised floor removal
- Effluent sampling 4-6 weeks
- Review with State Building Official has been requested
- County Road coordination will begin this month
- NWE coordination will also begin this month



STEM Ideas

STEM Ideas: Book-Based for Younger Students

- Build a Bridge for 21 Elephants – Brooklyn Bridge, story time, kit
- Roberto, the Insect Architect. Build a cardboard city.
- Egyptian Architecture – build a pyramid with sugar cubes.
- Three Little Pigs Challenge – Select a house type and build it.
- Rosie Revere, Engineer
- Iggy Peck, Architect



STEM Ideas

- Why do you measure sidewalks in square feet, but order and pay for concrete in cubic yards? How do you figure out how much you need? MATH
- How can a 3D model tell you where to put steel columns and ductwork? TECHNOLOGY
- How do you organize a construction project? MATH, TECHNOLOGY, ENGINEERING
- What are taxes? How do you know how much taxes each family has to pay? How does our project cost get paid for by the community? MATH, TECHNOLOGY
- Why does concrete get hot after you place it? How hot does it get? How do you make concrete? SCIENCE, CHEMISTRY, MATH



STEM Ideas

- What is energy? Where does it come from? How much does each continent have? How much does each continent need? How does it move from one place to the other? MATH, SCIENCE, TECHNOLOGY
- How can we use math to predict how strong the roof needs to be on the new gym to hold the average snow that we receive in the winter? MATH, SCIENCE, TECHNOLOGY
- How do you know where the corners of the building go? How do you know the wall is straight? Use a survey instrument to find the new corner of the school. MATH, SCIENCE, TECH, ENGR
- How much energy will our new building use? What does that cost? MATH, TECHNOLOGY, SCIENCE



STEM Ideas

- How do you draw a building? How do you read the drawings?
MATH, TECHNOLOGY, ENGR
- How do you communicate complex ideas using drawings, words, and images? TECHNOLOGY, ENGR, TECHNICAL WRITING
- What is a brick made of? How do you make a brick? How many people touch it from its materials to when it goes into a wall?
SCIENCE, MATH, ENGR, TECHNOLOGY
- Why do you wear a hard hat? Why is safety so important on a construction site? What injuries are unique to construction?

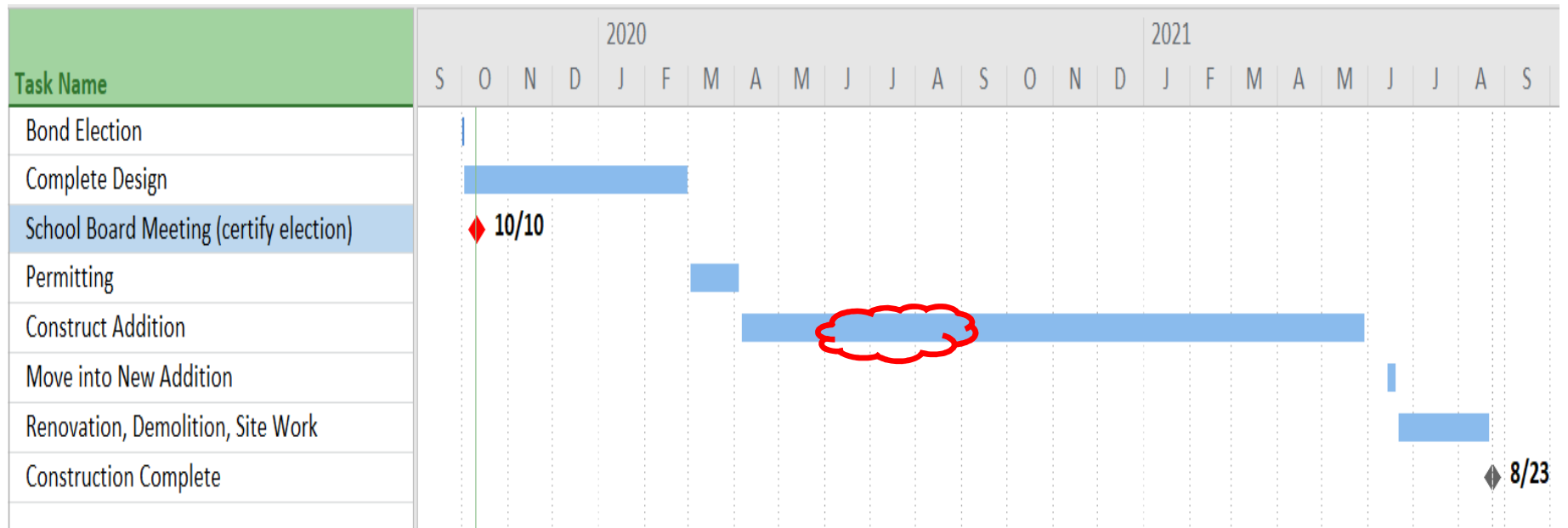


Schedule: Design

CONTINUE DESIGN WORK	OCTOBER 2, 2019
COMPLETE DD LEVEL DOCUMENTS (65%).....	NOVEMBER 30, 2019
COMPLETE CD LEVEL DOCUMENTS (95%).....	JANUARY 31, 2020
COMPLETE CD LEVEL DOCUMENTS (100%).....	FEBRUARY 28, 2020
ISSUE FOR PERMIT	MARCH 1, 2020
SECURE BUILDING PERMIT	MARCH 31, 2020



Schedule: Construction Summer 2020



Budget

- Each month we will review the total project budget.
- Contingency will be reviewed each month.
- This month, no changes have occurred and the project budget is attached.



Communication

Community

- Monthly Reports
- Public Meeting 1st wk December to review design

Teachers & Staff

- DropBox invitations
- Design reviews and tabletop reviews
- Model images
- Facilities Committee
- Bond Project Committee

Students & Parents

- Monthly Reports
- Student Council meetings
- APC meetings
- Public Meeting 1st week of December to review design



Anderson Bond Project Monthly Project Report

October | Karen Hedglin



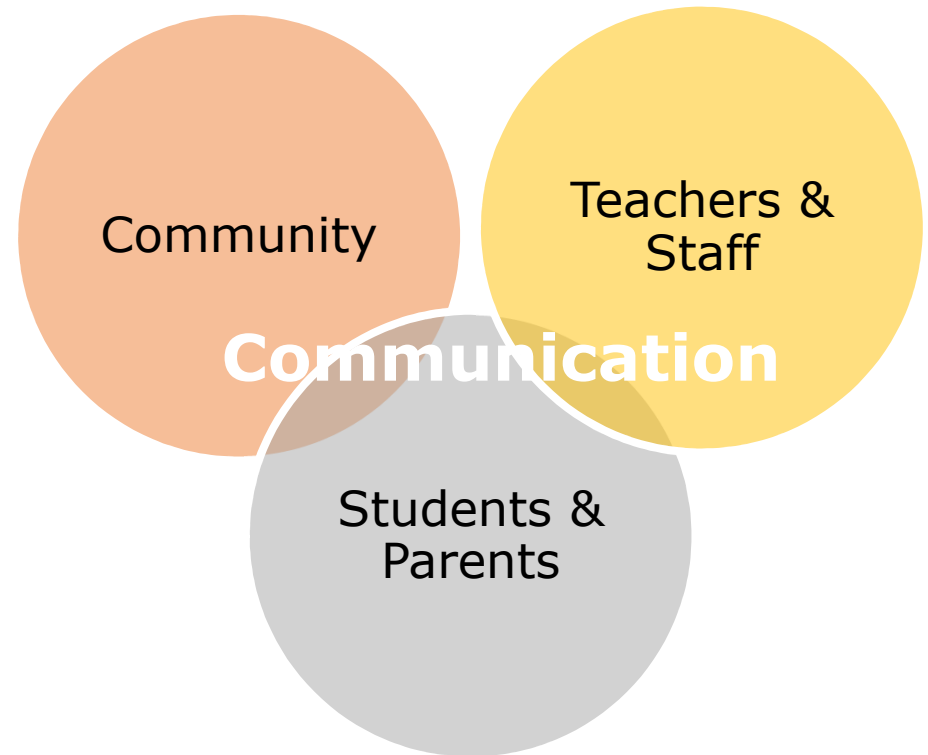
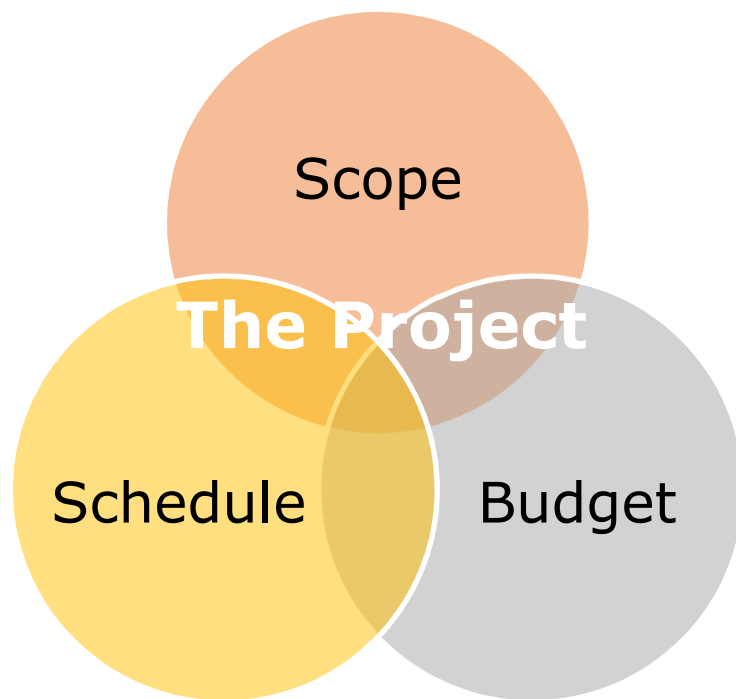
Process

The Bond Has Passed. What Happens Next?

- Election Canvass/Bond Sales
- Contracts - November
- Design process continues
- Construction planning continues
- Communication ongoing, takes a new shape
 - Bond Project Committee
 - Public Meetings: December and March
 - STEM Opportunities

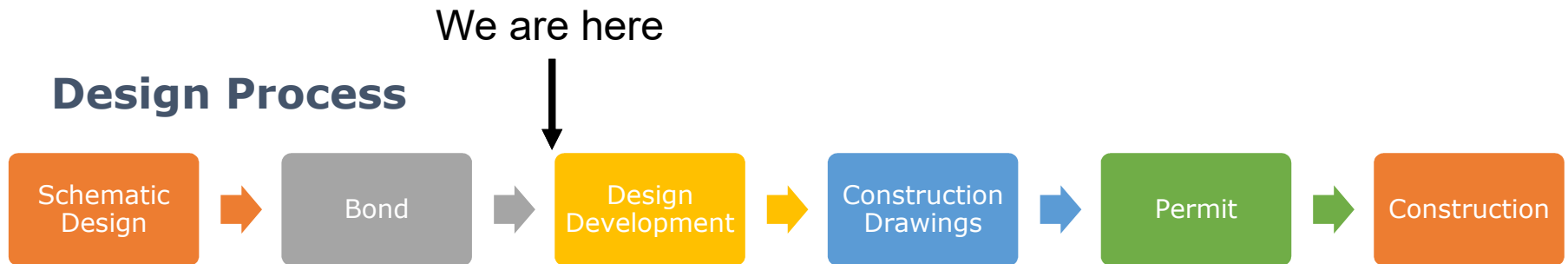


Report Overview



Scope

Design Process



- DropBox Site setup
- Wed Oct. 16th “Office Hours” 11am-1pm table top review
- Design Review Comment Log
- We are now entering the rinse and repeat part of design, where we draw/get feedback/draw again, then cost estimate. We true up to the budget at each design stage, then do it all over again.



Design Review Comment Log

REVIEW COMMENT LOG/ISSUE TRACKER

#	DWG	RM #	Description	Initials	Date	Response	Initials	Closed	Date Closed
46			Concern re: office being replaced at K/1 wing by custodial/storage.	Oriet	8/26/2016	Current office in middle school locker area will remain for this use. 9/15 - Removed one section of bleachers at gym south wall to accommodate office space and storage space lost with kitchen freezer relocation.	KH	✓	9/15/2016
47			Will new windows at mezzanine/specialist rooms be operable?	Hendrickson	8/26/2016	Depends on construction of CMU wall and location of bond beams, along with adjacent roof height. Awaiting DD drawing set for resolution. 9/15 - Two high windows will be included in the teacher workroom. They will not be operable.	KH	✓	9/15/2016
48			Will there be a running track at the gym?	O'Brien	8/26/2016	Yes, there will be a roughly 9' wide concrete floor track/pathway around the railing at the mezzanine. Community use will be encouraged, with access provided by an elevator or stairs once they pass through the front entrance and check in. Staff and student use will also be encouraged.	KH	✓	8/30/2016



Scope

- Music room and stage raised floor removal
- Effluent sampling 4-6 weeks
- Review with State Building Official has been requested
- County Road coordination will begin this month
- NWE coordination will also begin this month



STEM Ideas

STEM Ideas: Book-Based for Younger Students

- Build a Bridge for 21 Elephants – Brooklyn Bridge, story time, kit
- Roberto, the Insect Architect. Build a cardboard city.
- Egyptian Architecture – build a pyramid with sugar cubes.
- Three Little Pigs Challenge – Select a house type and build it.
- Rosie Revere, Engineer
- Iggy Peck, Architect



STEM Ideas

- Why do you measure sidewalks in square feet, but order and pay for concrete in cubic yards? How do you figure out how much you need? MATH
- How can a 3D model tell you where to put steel columns and ductwork? TECHNOLOGY
- How do you organize a construction project? MATH, TECHNOLOGY, ENGINEERING
- What are taxes? How do you know how much taxes each family has to pay? How does our project cost get paid for by the community? MATH, TECHNOLOGY
- Why does concrete get hot after you place it? How hot does it get? How do you make concrete? SCIENCE, CHEMISTRY, MATH



STEM Ideas

- What is energy? Where does it come from? How much does each continent have? How much does each continent need? How does it move from one place to the other? MATH, SCIENCE, TECHNOLOGY
- How can we use math to predict how strong the roof needs to be on the new gym to hold the average snow that we receive in the winter? MATH, SCIENCE, TECHNOLOGY
- How do you know where the corners of the building go? How do you know the wall is straight? Use a survey instrument to find the new corner of the school. MATH, SCIENCE, TECH, ENGR
- How much energy will our new building use? What does that cost? MATH, TECHNOLOGY, SCIENCE



STEM Ideas

- How do you draw a building? How do you read the drawings?
MATH, TECHNOLOGY, ENGR
- How do you communicate complex ideas using drawings, words, and images? TECHNOLOGY, ENGR, TECHNICAL WRITING
- What is a brick made of? How do you make a brick? How many people touch it from its materials to when it goes into a wall?
SCIENCE, MATH, ENGR, TECHNOLOGY
- Why do you wear a hard hat? Why is safety so important on a construction site? What injuries are unique to construction?

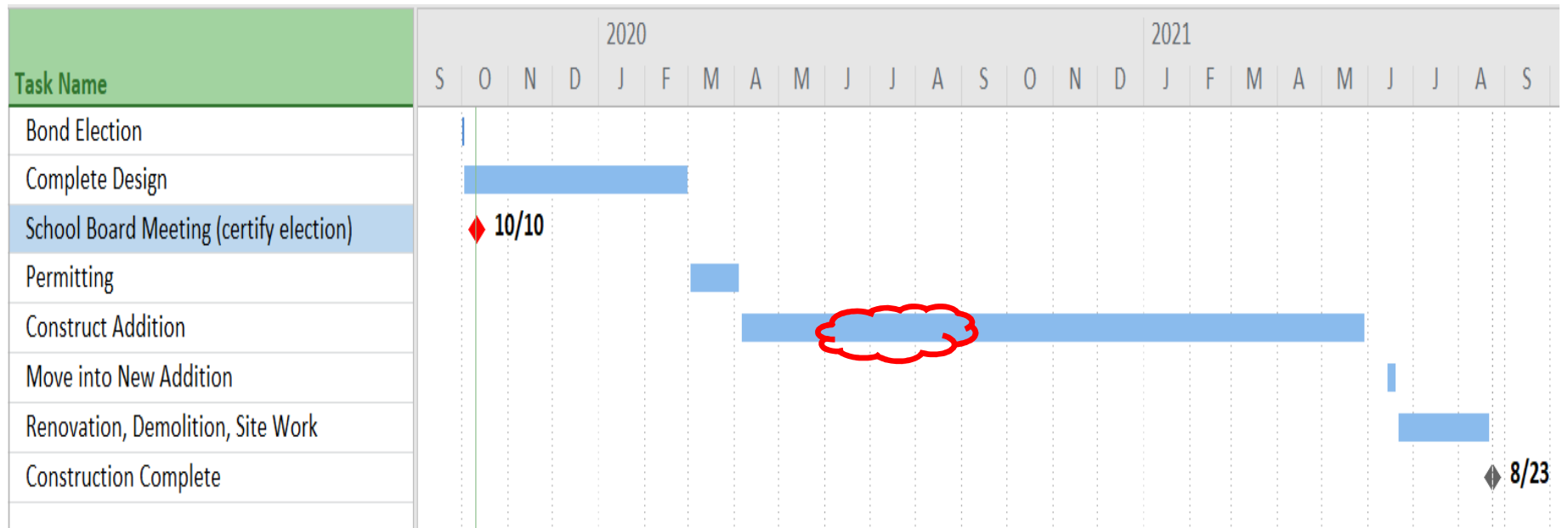


Schedule: Design

CONTINUE DESIGN WORK	OCTOBER 2, 2019
COMPLETE DD LEVEL DOCUMENTS (65%).....	NOVEMBER 30, 2019
COMPLETE CD LEVEL DOCUMENTS (95%).....	JANUARY 31, 2020
COMPLETE CD LEVEL DOCUMENTS (100%).....	FEBRUARY 28, 2020
ISSUE FOR PERMIT	MARCH 1, 2020
SECURE BUILDING PERMIT	MARCH 31, 2020



Schedule: Construction Summer 2020



Budget

- Each month we will review the total project budget.
- Contingency will be reviewed each month.
- This month, no changes have occurred and the project budget is attached.



Communication

Community

- Monthly Reports
- Public Meeting 1st wk December to review design

Teachers & Staff

- DropBox invitations
- Design reviews and tabletop reviews
- Model images
- Facilities Committee
- Bond Project Committee

Students & Parents

- Monthly Reports
- Student Council meetings
- APC meetings
- Public Meeting 1st week of December to review design



Anderson Bond Project Monthly Project Report

October | Karen Hedglin



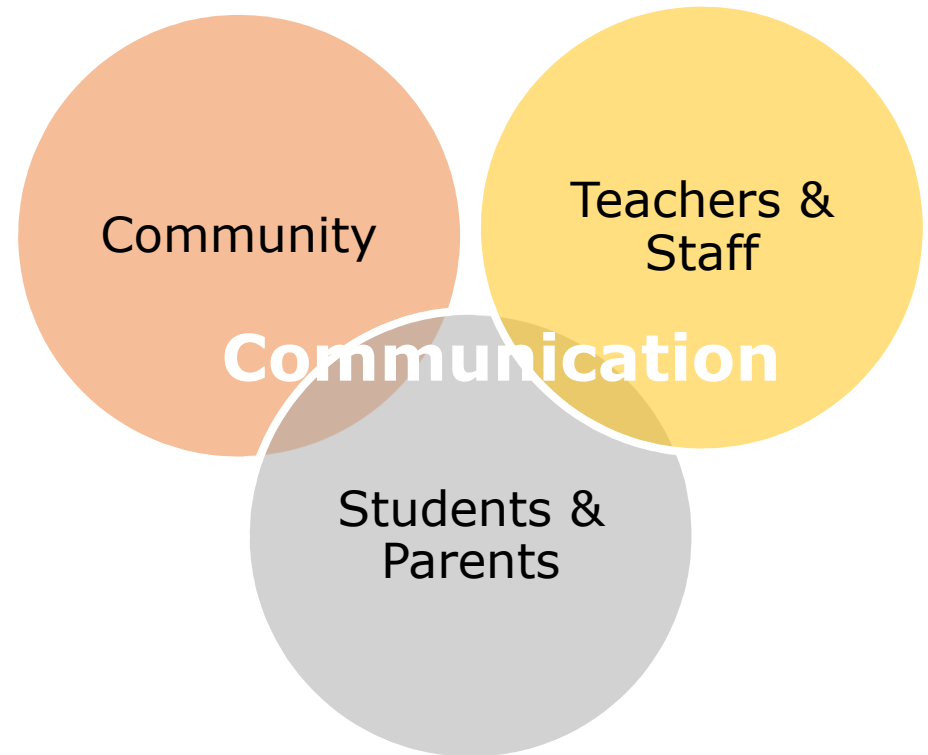
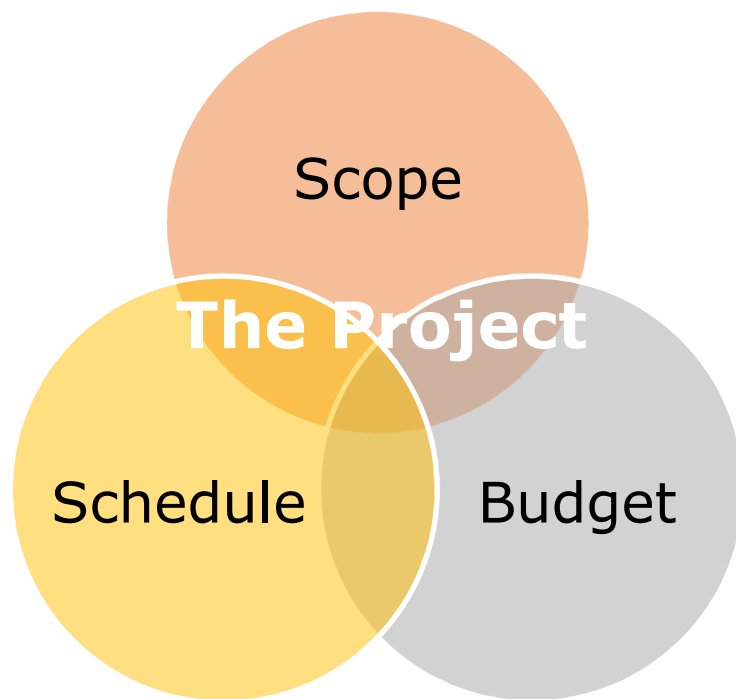
Process

The Bond Has Passed. What Happens Next?

- Election Canvass/Bond Sales
- Contracts - November
- Design process continues
- Construction planning continues
- Communication ongoing, takes a new shape
 - Bond Project Committee
 - Public Meetings: December and March
 - STEM Opportunities

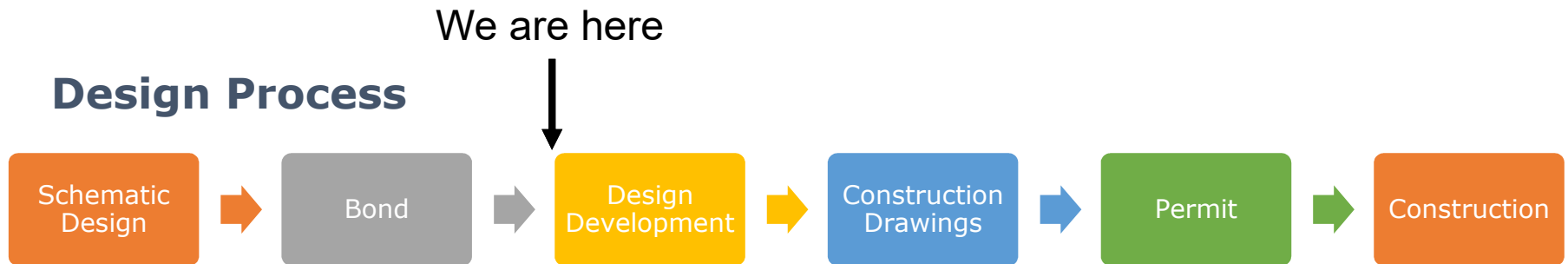


Report Overview



Scope

Design Process



- DropBox Site setup
- Wed Oct. 16th “Office Hours” 11am-1pm table top review
- Design Review Comment Log
- We are now entering the rinse and repeat part of design, where we draw/get feedback/draw again, then cost estimate. We true up to the budget at each design stage, then do it all over again.



Design Review Comment Log

REVIEW COMMENT LOG/ISSUE TRACKER

#	DWG	RM #	Description	Initials	Date	Response	Initials	Closed	Date Closed
46			Concern re: office being replaced at K/1 wing by custodial/storage.	Oriet	8/26/2016	Current office in middle school locker area will remain for this use. 9/15 - Removed one section of bleachers at gym south wall to accommodate office space and storage space lost with kitchen freezer relocation.	KH	✓	9/15/2016
47			Will new windows at mezzanine/specialist rooms be operable?	Hendrickson	8/26/2016	Depends on construction of CMU wall and location of bond beams, along with adjacent roof height. Awaiting DD drawing set for resolution. 9/15 - Two high windows will be included in the teacher workroom. They will not be operable.	KH	✓	9/15/2016
48			Will there be a running track at the gym?	O'Brien	8/26/2016	Yes, there will be a roughly 9' wide concrete floor track/pathway around the railing at the mezzanine. Community use will be encouraged, with access provided by an elevator or stairs once they pass through the front entrance and check in. Staff and student use will also be encouraged.	KH	✓	8/30/2016



Scope

- Music room and stage raised floor removal
- Effluent sampling 4-6 weeks
- Review with State Building Official has been requested
- County Road coordination will begin this month
- NWE coordination will also begin this month



STEM Ideas

STEM Ideas: Book-Based for Younger Students

- Build a Bridge for 21 Elephants – Brooklyn Bridge, story time, kit
- Roberto, the Insect Architect. Build a cardboard city.
- Egyptian Architecture – build a pyramid with sugar cubes.
- Three Little Pigs Challenge – Select a house type and build it.
- Rosie Revere, Engineer
- Iggy Peck, Architect



STEM Ideas

- Why do you measure sidewalks in square feet, but order and pay for concrete in cubic yards? How do you figure out how much you need? MATH
- How can a 3D model tell you where to put steel columns and ductwork? TECHNOLOGY
- How do you organize a construction project? MATH, TECHNOLOGY, ENGINEERING
- What are taxes? How do you know how much taxes each family has to pay? How does our project cost get paid for by the community? MATH, TECHNOLOGY
- Why does concrete get hot after you place it? How hot does it get? How do you make concrete? SCIENCE, CHEMISTRY, MATH



STEM Ideas

- What is energy? Where does it come from? How much does each continent have? How much does each continent need? How does it move from one place to the other? MATH, SCIENCE, TECHNOLOGY
- How can we use math to predict how strong the roof needs to be on the new gym to hold the average snow that we receive in the winter? MATH, SCIENCE, TECHNOLOGY
- How do you know where the corners of the building go? How do you know the wall is straight? Use a survey instrument to find the new corner of the school. MATH, SCIENCE, TECH, ENGR
- How much energy will our new building use? What does that cost? MATH, TECHNOLOGY, SCIENCE



STEM Ideas

- How do you draw a building? How do you read the drawings?
MATH, TECHNOLOGY, ENGR
- How do you communicate complex ideas using drawings, words, and images? TECHNOLOGY, ENGR, TECHNICAL WRITING
- What is a brick made of? How do you make a brick? How many people touch it from its materials to when it goes into a wall?
SCIENCE, MATH, ENGR, TECHNOLOGY
- Why do you wear a hard hat? Why is safety so important on a construction site? What injuries are unique to construction?

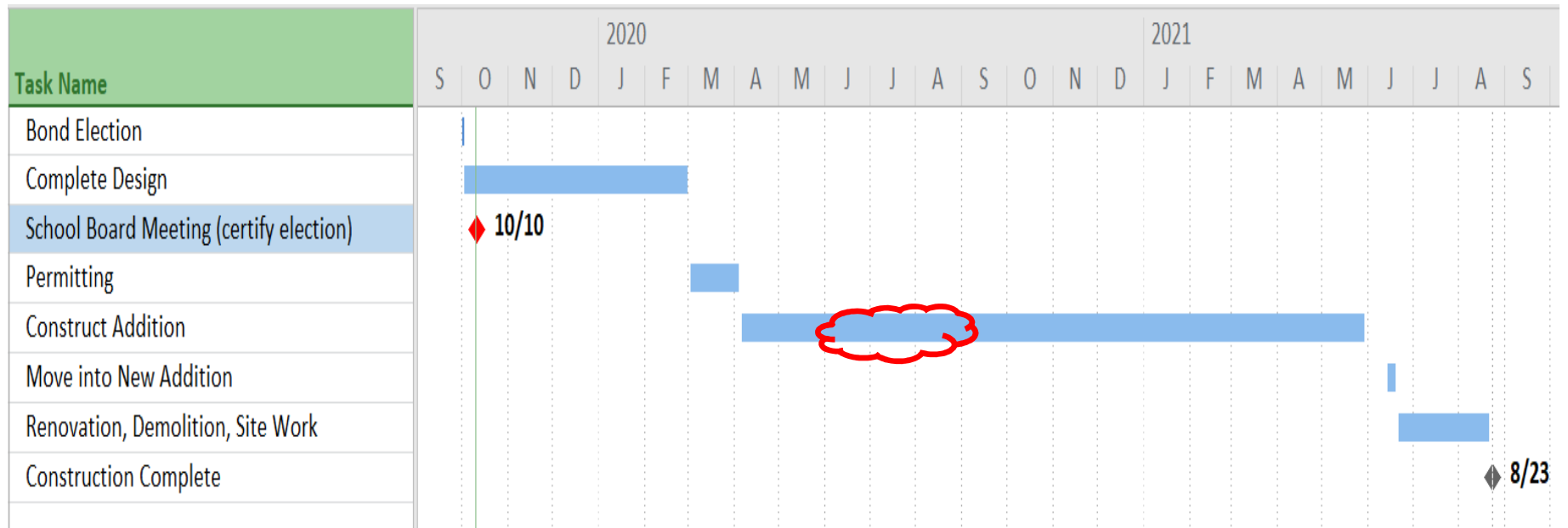


Schedule: Design

CONTINUE DESIGN WORK	OCTOBER 2, 2019
COMPLETE DD LEVEL DOCUMENTS (65%).....	NOVEMBER 30, 2019
COMPLETE CD LEVEL DOCUMENTS (95%).....	JANUARY 31, 2020
COMPLETE CD LEVEL DOCUMENTS (100%).....	FEBRUARY 28, 2020
ISSUE FOR PERMIT	MARCH 1, 2020
SECURE BUILDING PERMIT	MARCH 31, 2020



Schedule: Construction Summer 2020



Budget

- Each month we will review the total project budget.
- Contingency will be reviewed each month.
- This month, no changes have occurred and the project budget is attached.



Communication

Community

- Monthly Reports
- Public Meeting 1st wk December to review design

Teachers & Staff

- DropBox invitations
- Design reviews and tabletop reviews
- Model images
- Facilities Committee
- Bond Project Committee

Students & Parents

- Monthly Reports
- Student Council meetings
- APC meetings
- Public Meeting 1st week of December to review design



Anderson Bond Project Monthly Project Report

October | Karen Hedglin



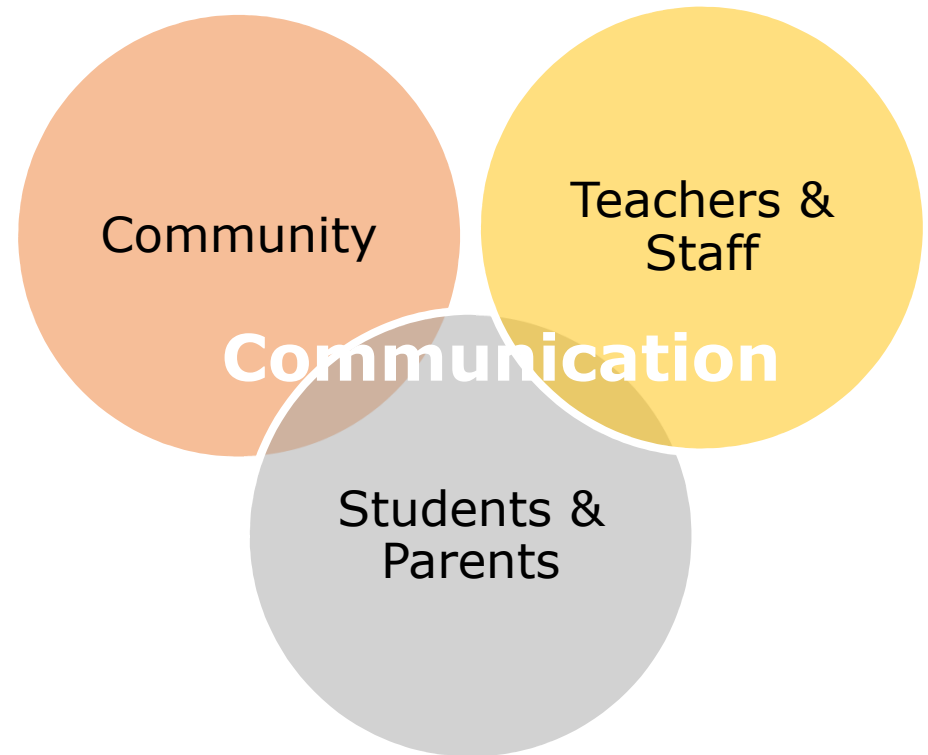
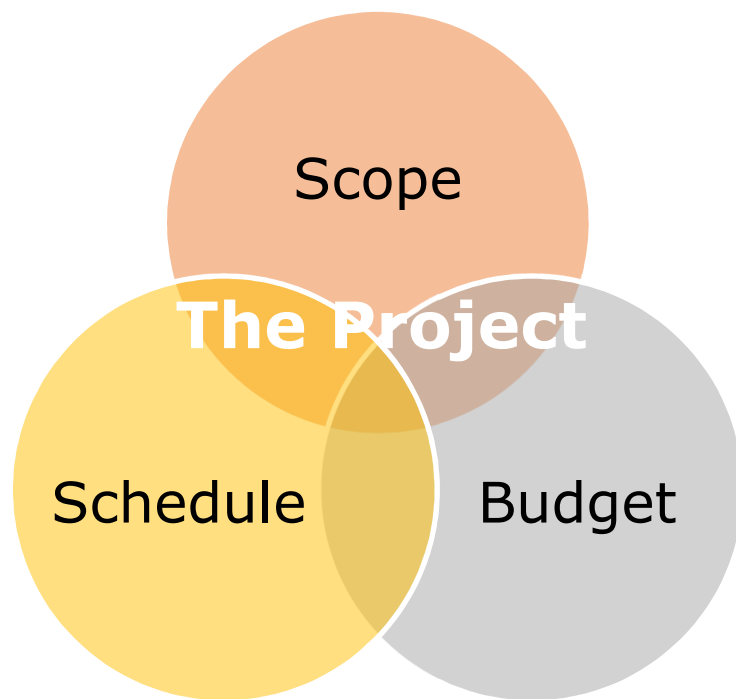
Process

The Bond Has Passed. What Happens Next?

- Election Canvass/Bond Sales
- Contracts - November
- Design process continues
- Construction planning continues
- Communication ongoing, takes a new shape
 - Bond Project Committee
 - Public Meetings: December and March
 - STEM Opportunities

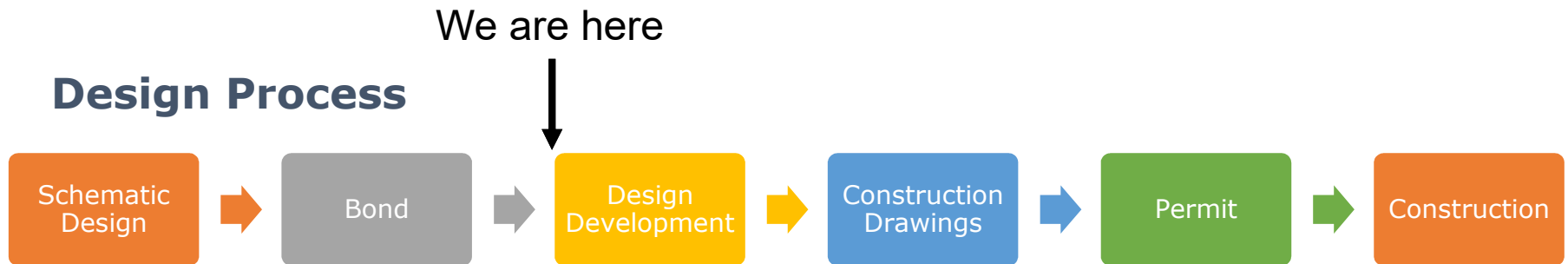


Report Overview



Scope

Design Process



- DropBox Site setup
- Wed Oct. 16th "Office Hours" 11am-1pm table top review
- Design Review Comment Log
- We are now entering the rinse and repeat part of design, where we draw/get feedback/draw again, then cost estimate. We true up to the budget at each design stage, then do it all over again.



Design Review Comment Log

REVIEW COMMENT LOG/ISSUE TRACKER

#	DWG	RM #	Description	Initials	Date	Response	Initials	Closed	Date Closed
46			Concern re: office being replaced at K/1 wing by custodial/storage.	Oriet	8/26/2016	Current office in middle school locker area will remain for this use. 9/15 - Removed one section of bleachers at gym south wall to accommodate office space and storage space lost with kitchen freezer relocation.	KH	✓	9/15/2016
47			Will new windows at mezzanine/specialist rooms be operable?	Hendrickson	8/26/2016	Depends on construction of CMU wall and location of bond beams, along with adjacent roof height. Awaiting DD drawing set for resolution. 9/15 - Two high windows will be included in the teacher workroom. They will not be operable.	KH	✓	9/15/2016
48			Will there be a running track at the gym?	O'Brien	8/26/2016	Yes, there will be a roughly 9' wide concrete floor track/pathway around the railing at the mezzanine. Community use will be encouraged, with access provided by an elevator or stairs once they pass through the front entrance and check in. Staff and student use will also be encouraged.	KH	✓	8/30/2016



Scope

- Music room and stage raised floor removal
- Effluent sampling 4-6 weeks
- Review with State Building Official has been requested
- County Road coordination will begin this month
- NWE coordination will also begin this month



STEM Ideas

STEM Ideas: Book-Based for Younger Students

- Build a Bridge for 21 Elephants – Brooklyn Bridge, story time, kit
- Roberto, the Insect Architect. Build a cardboard city.
- Egyptian Architecture – build a pyramid with sugar cubes.
- Three Little Pigs Challenge – Select a house type and build it.
- Rosie Revere, Engineer
- Iggy Peck, Architect



STEM Ideas

- Why do you measure sidewalks in square feet, but order and pay for concrete in cubic yards? How do you figure out how much you need? MATH
- How can a 3D model tell you where to put steel columns and ductwork? TECHNOLOGY
- How do you organize a construction project? MATH, TECHNOLOGY, ENGINEERING
- What are taxes? How do you know how much taxes each family has to pay? How does our project cost get paid for by the community? MATH, TECHNOLOGY
- Why does concrete get hot after you place it? How hot does it get? How do you make concrete? SCIENCE, CHEMISTRY, MATH



STEM Ideas

- What is energy? Where does it come from? How much does each continent have? How much does each continent need? How does it move from one place to the other? MATH, SCIENCE, TECHNOLOGY
- How can we use math to predict how strong the roof needs to be on the new gym to hold the average snow that we receive in the winter? MATH, SCIENCE, TECHNOLOGY
- How do you know where the corners of the building go? How do you know the wall is straight? Use a survey instrument to find the new corner of the school. MATH, SCIENCE, TECH, ENGR
- How much energy will our new building use? What does that cost? MATH, TECHNOLOGY, SCIENCE



STEM Ideas

- How do you draw a building? How do you read the drawings?
MATH, TECHNOLOGY, ENGR
- How do you communicate complex ideas using drawings, words, and images? TECHNOLOGY, ENGR, TECHNICAL WRITING
- What is a brick made of? How do you make a brick? How many people touch it from its materials to when it goes into a wall?
SCIENCE, MATH, ENGR, TECHNOLOGY
- Why do you wear a hard hat? Why is safety so important on a construction site? What injuries are unique to construction?

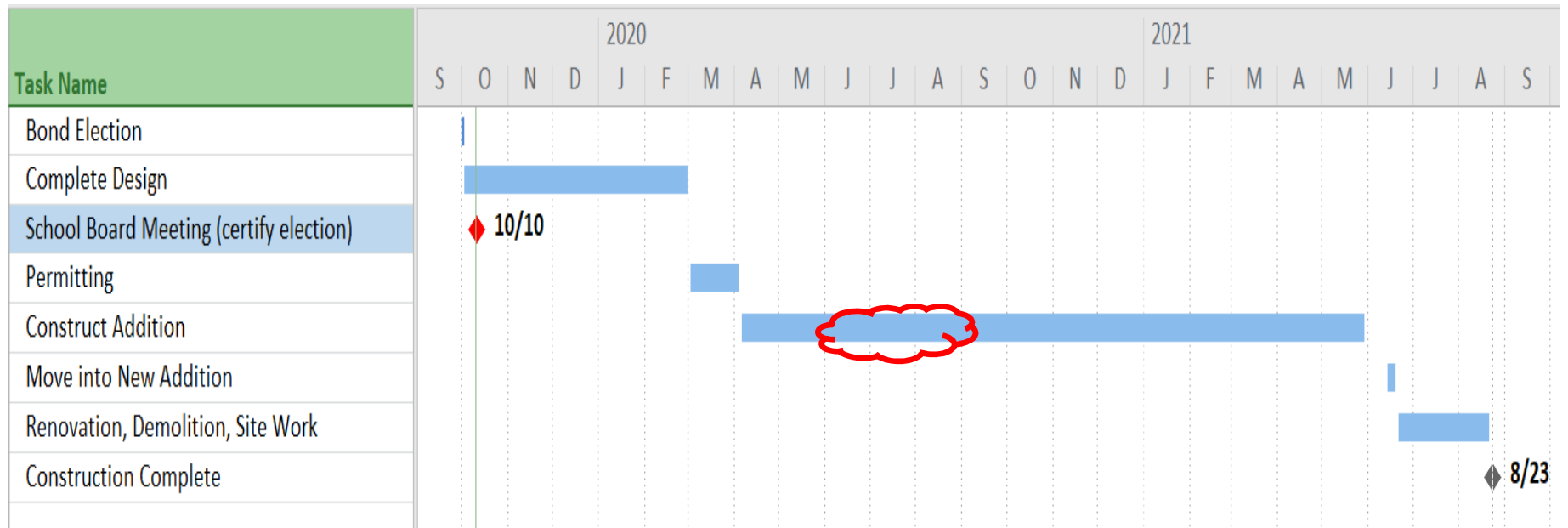


Schedule: Design

CONTINUE DESIGN WORK	OCTOBER 2, 2019
COMPLETE DD LEVEL DOCUMENTS (65%).....	NOVEMBER 30, 2019
COMPLETE CD LEVEL DOCUMENTS (95%).....	JANUARY 31, 2020
COMPLETE CD LEVEL DOCUMENTS (100%).....	FEBRUARY 28, 2020
ISSUE FOR PERMIT	MARCH 1, 2020
SECURE BUILDING PERMIT	MARCH 31, 2020



Schedule: Construction Summer 2020



Budget

- Each month we will review the total project budget.
- Contingency will be reviewed each month.
- This month, no changes have occurred and the project budget is attached.



Communication

Community

- Monthly Reports
- Public Meeting 1st wk December to review design

Teachers & Staff

- DropBox invitations
- Design reviews and tabletop reviews
- Model images
- Facilities Committee
- Bond Project Committee

Students & Parents

- Monthly Reports
- Student Council meetings
- APC meetings
- Public Meeting 1st week of December to review design

